

The Epidemiology of COVID-19 in Canada in 2020: The Pre-Vaccine Era

February 2021



The Epidemiology of COVID-19 in Canada in 2020: The Pre-Vaccine Era

An RSC Policy Briefing

Authors

Wendy Sligl (Chair)	University of Alberta
David Waldner	University of Alberta
Jennie Johnstone	University of Toronto
Robyn Harrison	University of Alberta
Duncan Webster	Dalhousie University
Lynora Saxinger	University of Alberta

Peer Review Monitor

Tom Marrie, FRSC	Dalhousie University
------------------	----------------------

Peer Reviewers

Nick Daneman	University of Toronto
Rob Fowler	University of Toronto
Srinivas Murthy	The University of British Columbia
David Patrick	The University of British Columbia
Dan Reid	Dalhousie University
Robert Strang	Chief Medical Officer of Health, Nova Scotia

Suggested citation for Policy Briefing Report:

Waldner D, Harrison R, Johnstone J, Saxinger L, Webster D, Sligl W. *The Epidemiology of COVID-19 in Canada in 2020: The Pre-Vaccine Era*. Royal Society of Canada. 2021

Cover Art

Christine De Vuono, *For Your Own Good*, (2020)

Over the course of the pandemic, those in long term care facilities have been hit hardest with the impact of COVID-19 outbreaks. The response has been to lock down care homes and ban visitors, volunteers and even care packages, as attempts to stop the virus from entering the facility. This had the unintended, but very real consequence of isolating our most vulnerable from those who care for and love them. "For Your Own Good", made of 100 carved figures from identical bars of soap, then placed in mason jars, which in turn are placed on shelves, allow us to look in on the miniature elderly figures, who look out at us. Although the pandemic has forced this isolation, it only amplifies what many elderly historically endure within our society on a chronic and routine basis.

Land Acknowledgement

The headquarters of the Royal Society of Canada is located in Ottawa, the traditional and unceded territory of the Algonquin Nation.

The opinions expressed in this report are those of the authors and do not necessarily represent those of the Royal Society of Canada.

Background on the Policy Briefing Report Process

Established by the President of the Royal Society of Canada in April 2020, the RSC Task Force on COVID-19 was mandated to provide evidence-informed perspectives on major societal challenges in response to and recovery from COVID-19.

The Task Force established a series of Working Groups to rapidly develop Policy Briefings, with the objective of supporting policy makers with evidence to inform their decisions.

About the Authors

Robyn A. Harrison, Clinical Professor at the University of Alberta and Provincial Communicable Disease Consultant with Alberta Health Services

Jennie Johnstone, Associate Professor, Laboratory Medicine and Pathobiology, University of Toronto and Medical Director of Infection Prevention and Control, Sinai Health

Lynora Saxinger, co-Chair of the Alberta COVID-19 Scientific Advisory Group and Associate Professor of Medicine at the University of Alberta

Wendy Sligl, Professor, Department of Critical Care Medicine and Division of Infectious Diseases in the Department of Medicine at the University of Alberta

David Waldner, Clinical Lecturer, Division of Infectious Diseases, Department of Medicine at the University of Alberta

Duncan Webster, Medical Microbiologist at the Saint John Regional Hospital and Associate Professor of Medicine at Dalhousie University

Table of Contents

Executive Summary	4
Overview of COVID-19 Epidemiology in Canada	9
Public Health Response and Mitigating Transmission	12
Key Concepts.....	12
Differences between provinces and territories.....	14
Masking Policies	17
Testing Strategies	18
COVID-19 in Canadian Workplaces	20
Healthcare workers.....	21
Business, Industry, Public Service Settings, and Outbreaks	23
Mitigating risk day-to-day in workplace settings.....	26
COVID-19 in Long-term Care in Canada	27
Delayed Preparation	27
Systemic Gaps	27
Resident Factors	28
Outbreak Response	28
Approach to Visitors in Long-term Care	29
Clinical Presentation and Outcomes	29
COVID-19 and the Education System in Canada	29
School closures, re-opening and home-schooling.....	29
Incidence and transmission within schools.....	31
Experience after school re-opening	34
Severe COVID-19 disease in Canada	36
Risk factors for Severe COVID-19	36
Presentation.....	37
Mortality.....	38
ICU capacity	39
Multisystem Inflammatory Syndrome in Children (MIS-C)	40
Post-acute COVID or prolonged post COVID-19 symptoms.....	40
COVID-19 in Vulnerable Populations in Canada	41
Indigenous Peoples	41
Racial Disparity – Ethnic Minorities & Newcomers to Canada	42
People Who Use Drugs	43
People Who Are Homeless.....	44
People Who Are Incarcerated	45
Sex and Gender Disparities	46
People Living With Disability.....	47
References	49

Executive Summary

Overview of COVID-19 Epidemiology in Canada

- Coronavirus disease 2019 (COVID-19), the disease caused by the novel coronavirus now known as severe acute respiratory syndrome coronavirus 2 (SARS-CoV-2), predominantly manifests as pneumonia, however, COVID-19 can also present with an array of extrapulmonary signs and symptoms.
- As of December 5, 2020, there have been 408,921 cases of COVID-19 in Canada and 1,088 cases per 100,000 people.
- The first wave of the COVID-19 epidemic in Canada peaked in mid-April 2020 with subsequent reduction in cases due to various public health interventions.
- As the epidemic has progressed Canadians have become less adherent to public health recommendations, and these trends in self-reported public behaviour coincided with a national R0 exceeding 1.0 in early August 2020, and the emergence of a “second wave”.
- As of early December 2020, Canada’s case fatality rate (CFR), which represents the proportion of deaths among individuals diagnosed clinically with COVID-19, is 3.4%.

Public Health Response and Mitigating Transmission

Key Concepts

- Public health strategies strive to lessen the severity of the pandemic.
- Prevention of spread and amplification of cases within healthcare settings, including long-term care homes, is paramount.
- General practices employed for mitigation include, (i) masking, (ii) social/physical distancing, (iii) handwashing, (iv) cleaning of shared surfaces and objects, and (v) optimizing indoor ventilation and promoting outdoor interactions.
- With mitigation practices, the reproductive number of the virus (R0) can be reduced.

Differences among provinces

- Provinces vary with regard to geography, population size and density, and health demographics, which results in variable pandemic impact.
- Provinces, which have jurisdiction over health, have varied in their public health approach to the pandemic, though there are common themes.

Masking policies

- Though contentious to some, masking has been demonstrated to reduce transmission of SARS-CoV-2 from person to person in a variety of settings and in combination with other mitigating practices.

Testing Strategies

- Screening and testing strategies are an important component of the Public Health response.
- Knowledge of risk and of confirmed positive COVID-19 cases is vital to the efficient and effective application of specific mitigation practices, including self-isolation and quarantine.

- Screening strategies may vary depending on population and pandemic factors within a region or province at a given time.

COVID-19 in Canadian Workplaces

- Collaboration among experts in public health, occupational health and safety, infection prevention and control, and employers can help to prevent the spread of COVID-19 in occupational settings and communities by implementing tailored preventative measures.
- Timely, transparent, and factual communication with the working population about areas of risk and safety is essential.
- There are no nationally standardized definitions for outbreaks across various settings in Canada. Attempts to make comparisons across settings and jurisdictions must take this into account when considering or setting policy, and when communicating about risk mitigation for the Canadian workforce.
- Supporting Canadian workers and establishing safe partnerships with public health teams in test-trace-isolate strategies will greatly facilitate disease control and help to contain other costs.
- Support for workers includes adequate and stringently monitored protections at work; access to testing; availability of protective equipment; education; sick day policies; job security; community supports; and the absence of discrimination.

The Impact of the COVID-19 Pandemic on Long-term Care Homes in Canada

- The COVID-19 pandemic has had a devastating impact on residents and staff of long-term care homes (LTCH) in Canada.
- Residents of LTCHs have accounted for approximately 80% of all COVID-19 related deaths in Canada.
- Reasons for the frequency, size and scale of outbreaks are multifactorial and complex, but involve delays in preparation, longstanding system challenges in the sector, as well as underlying resident factors.
- Outbreaks frequently overwhelm the local LTCH's ability to respond, requiring a larger system response; in some cases even involving the military.
- The clinical presentation varies widely in this population; morbidity and mortality in residents is high.

COVID-19 and the Education System in Canada

- COVID-19 symptoms are generally milder in children compared with adults, and children are less likely to become seriously ill. Available knowledge shows that children are less likely to be infected on exposure, and that transmission between children is relatively limited.
- Transmission in schools is relatively rare, but school-based cases appear to increase as community transmission rates increase.
- School closures have an uncertain effect on overall community COVID-19 transmission as they have usually occurred within the context of a set of public health restrictions.

- Older children and teens appear to transmit SARS-CoV-2 more like adults, although remain at low risk of severe disease or complications.

Severe COVID-19 in Canada

- The spectrum of COVID-19 is varied, however greater than 90% infected Canadians have recovered at home, 8% have required hospitalization, and one fifth of hospitalized patients have required intensive care. A quarter of those in intensive care have required ventilators.
- Risk factors for severe disease in Canadians include age (> 60 years old), male sex, and the presence of pre-existing medical conditions (such as diabetes, high blood pressure, chronic lung disease and obesity).
- Hospitalization, if required, usually occurs approximately one week after the onset of symptoms.
- Severe disease most commonly presents as acute respiratory distress syndrome (widespread lung damage) and appears to be associated with hyperinflammation.
- Risk factors for death mirroring those factors associated with severe disease—namely age and pre-existing medical conditions.
- Most countries, including Canada, have had to increase their hospital and ICU capacity during the pandemic. This has been accomplished through increasing physical (ventilators, beds, space) and human (mainly via redeployment) resources, suspending or delaying elective and non-urgent procedures, utilizing triage criteria in some regions, and utilizing models to predict the timing and severity of surges.
- Some patients experience varied long-lasting post-viral symptoms for weeks or months after acute COVID-19, calling for the need for multi-disciplinary post-recovery clinics.

COVID-19 within Vulnerable Populations in Canada

Key Concepts

- Vulnerable populations within Canada are at increased risk of acquiring SARS-CoV-2, do not access the healthcare system in traditional ways and appear to be at risk of more severe COVID-19.

Indigenous Peoples

- To date there is a paucity of publicly available or published data on COVID-19 and Indigenous Peoples.
- Research may help to determine optimal pandemic strategies for Indigenous people and individual communities, though it is critical that the OCAP® principles be respected.

Racial Disparity – Ethnic Minorities & Newcomers to Canada

- Reporting of comprehensive COVID-19 data in relation to race and ethnicity is currently limited in Canada.
- Minorities in Canada are more likely to have risk factors for severe COVID-19.
- Immigrants, refugees and other newcomers appear to be disproportionately affected by COVID-19 in Canada.

- The development of a national strategy to collect and report race and ethnicity data during the COVID-19 pandemic response.

People Who Use Drugs (PWUD)

- The public health crises impacting PWUD have been made worse by the pandemic.
- Mitigation strategies have made the management and prevention of substance use disorders more challenging.
- Unintentional illicit drug overdose deaths have increased during the pandemic.
- Many PWUD are at increased risk of acquiring COVID-19 and at risk of severe outcomes.
- Maintaining adequate management of substance use disorders during the pandemic will require advocacy and innovation.

People Who Are Homeless

- Homelessness in Canada presents key challenges for pandemic planning due to complex health, situational and structural vulnerabilities.
- The homeless population are at increased risk of viral acquisition and severe COVID-19.
- Ensuring adequate space for mitigating practices, including social distancing in shelters and other safe spaces for the homeless, is critical to community pandemic planning.

People Who Are Incarcerated

- Correctional facilities are associated with high rates of respiratory virus transmission, including SARS-CoV-2.
- Outbreaks of COVID-19 are being reported in Canadian correctional facilities.
- Decreased incarceration and increased decarceration with community supported re-entry can ease the burden of COVID-19 in correctional facilities.
- In this setting, calls for changes to drug policy and decriminalization in Canada have grown stronger.

Sex and Gender Disparities

- Sex and gender influence COVID-19 risk and outcomes.
- The pandemic has accentuated existing disparities.
- Health surveillance systems should include information pertaining to sexual orientation or gender identity to optimize the pandemic response and to support sex and gender minorities while lessening the risk for further stigmatization.

People with Disabilities

- Disabilities put many individuals at higher risk of COVID-19 infection.
- Disruption of services and supports due to the pandemic have a major impact on individuals with disabilities.
- There is a paucity of Canadian data pertaining to disabled communities during the pandemic.

Recommendations

1. Prioritize screening, testing and contact tracing to prevent transmission of COVID-19 infection in all settings. Ensure adequate investment in public health infrastructure for test-trace-isolate strategies during future pandemics.
2. Ensure timely and transparent public reporting on infections, hospitalizations, deaths, risk factors, and outbreaks, in order to maintain trust and understanding amongst Canadians. This can be used as a key strategy to keep Canadians engaged as partners in the prevention of COVID-19 transmission.
3. Develop a national strategy to collect and report race, ethnicity and other population-specific data to bolster the evidence-base informing the pandemic response and protections for high risk and vulnerable populations.
4. Establish nationally standardized definitions and case reporting requirements for outbreaks in various settings including workplaces and schools during pandemics.
5. Develop mechanisms for reporting COVID-19 infections acquired amongst workers and ensure effective systems are in place to monitor the provision and maintenance of adequate protection in places of work and care. Care settings are those settings where protection of staff and residents are linked such as healthcare, congregate living, and correctional facilities.
6. Utilize standardized case epidemiology and outbreak tracking to inform policy on vaccine allocation and to facilitate communication with the public about vaccination program implementation.

The Epidemiology of COVID-19 in Canada in 2020: The Pre-Vaccine Era

Overview of COVID-19 Epidemiology in Canada

A novel coronavirus, now known as severe acute respiratory syndrome coronavirus 2 (SARS-CoV-2), was first identified in Wuhan, China in late December 2019. Coronavirus disease 2019 (COVID-19), caused by SARS-CoV-2, predominantly manifests as pneumonia, however, COVID-19 can also present with an array of extrapulmonary signs and symptoms.(1) In this document we will describe the epidemiology—the study of disease incidence, distribution and control—of COVID-19 in Canada as of late 2020. We will explore the timeline, distribution and determinants of SARS-CoV-2 transmission within Canada as well as describe Canada's public health response to COVID-19 within various sectors and populations including Canadian workplaces; healthcare settings including long-term care; and school settings. Our current understanding of the epidemiology of COVID-19 continues to evolve, and this summary, written in late 2020, prior to availability of vaccines for COVID-19 prevention, reflects information available as of November 30, 2020. It should be acknowledged that the epidemiology will continue to evolve over the weeks and months that follow.

SARS-CoV-2 continues to spread within Canada following the first domestic report of COVID-19 on January 25, 2020 in a patient returning to Toronto from Wuhan, China.(2) Early transmission of COVID-19 within Canada was strongly associated with international travel and accounted for approximately half of cases in January 2020.(3) Government advisories against non-essential travel on March 14 followed shortly by international travel restrictions a week later, resulted in a sharp decline in cases, with less than 1% of all cases being directly related to travel by April.(3) Despite these early efforts, progressive community transmission ensued in March, with rising case counts across Canada during the first epidemic wave, peaking in mid-April 2020.(4)

Quebec became the early epicentre of the COVID-19 pandemic within Canada at least in part due to an earlier spring break and associated travel as compared to other provinces and territories. (5) COVID-19 related deaths in Quebec reached 65 per 100,000 in early July, exceeded only by Belgium and the United Kingdom globally.(4) In April and May, COVID-19 was the leading cause of death in Quebec, and approximately equal to death from heart disease and cancer combined. Fortunately, early public health interventions (physical distancing, restrictions on gatherings and closures of non-essential services and schools) had a favourable impact on transmission, with modelling estimates predicting double the hospitalizations had these interventions been delayed by one week.(5) Subsequent public health measures effectively reduced the reproductive number (R_0), an epidemiologic metric used to describe the contagiousness of an infection, to below one for most of May and June, resulting in falling case numbers.(3) When R_0 values remain above one outbreaks are expected to continue and when they fall below one they are expected to decrease and eventually end.

Public concern only began to rise after Canadians began to see significant community transmission, with 31% reporting COVID-19 as a serious threat in early February compared to 88% in late March.(6) In addition, there was strong adherence to public health recommendations early in the pandemic with 84% of all survey respondents stating they regularly complied with physical distancing measures.(6) This was further supported by Canadian mobile phone location data which suggested that maximum cumulative travel from home fell by 90% during the spring of 2020.(7)

Concerningly, a repeat national survey in August 2020 showed less adherence to public health recommendations with only 47% reporting compliance.(8) Manitoba, Saskatchewan and Alberta were found to have the lowest public compliance at 30%, 32% and 37%, respectively.(8) These trends in self-reported public behaviour coincided with a national R_0 exceeding one in early August 2020, and “second waves” of varied severity are now occurring in most provinces. The extent, however, to which seasonality has contributed to increasing cases has yet to be fully appreciated, but requires consideration given the epidemiology of other respiratory viruses.(9,10) It has been estimated that a reduction of physical contact by 45% within communities is required to reduce the R_0 to below one, a goal seemingly met by Canadians during initial widespread government mandated lockdowns early in the pandemic, which now appears increasingly difficult to achieve. (7)

As of December 5, 2020, there have been 408,921 cases of COVID-19 in Canada at an incidence of 1,088 cases per 100,000 people.(4) These data likely underestimate the true burden of COVID-19 in Canada as a survey conducted early in the pandemic showed that only a minority of those with symptoms suspicious for COVID-19 were tested.(11) To date the majority of cases (75.5%) have occurred in Ontario and Quebec with relative sparing of northern territories and Atlantic provinces, with no cases of COVID-19 being reported in Nunavut until November 6, 2020.(4) In addition to ongoing transmission in Quebec and Ontario, a steep rise in case counts developed in Alberta, Manitoba, British Columbia, and Saskatchewan during November and December 2020 (Figure 1). Of concern, an increasing number of COVID-19 cases have had no known or identifiable source, with approximately 35% of cases falling into this category.(3) Outbreaks have accounted for almost 20% of COVID-19 cases within Canada with the majority occurring in long-term care and retirement homes, however, easing of restrictions over the summer has led to an increase in outbreaks associated with social gatherings, schools and childcare along with homeless shelters, correctional facilities and hospitals.(3)

To date most cases of COVID-19 in Canada have occurred in people under the age of 29 years. Presently this age group accounts for 33.4% of all cases despite earlier studies showing that those under 20 years of age were half as susceptible to infection.(3,12) While the incidence of infection in this age group has remained high, mortality is relatively low (0.1%) with only 16 deaths among those under the age of 30 reported through the end of 2020.(4) Transmission of SARS-CoV-2 does not appear to be uniform with numerous epidemiological studies showing that a small proportion of individuals ($\leq 20\%$) account for the majority (approximately 80%) of infections.(13,14) These findings suggest that transmission of SARS-CoV-2 is subject to overdispersion frequently manifesting as super-spreader events resulting in large outbreaks associated with social and other group gatherings.(13,14)

Concerningly, a high number of cases have been observed in those over 80 years, with an incidence of 102 cases per 100,000 people.(3) This is of particular concern as this age group has accounted for over 70% of COVID-19 related deaths, with 27.3% mortality.(3) Advanced age has remained the leading risk factor for severe disease and death throughout the pandemic and has been well described in other countries.(1) Moreover, initial international reports of severe disease and increased mortality observed in those with pre-existing medical problems such as cardiovascular disease, diabetes, hypertension and chronic lung disease have been reproduced in Canada, with 73.5% of those admitted to an intensive care unit (ICU) having at least one pre-existing medical condition in one early Canadian report.(15) Thus far in Canada, 7.8% of cases

have required hospitalization of which 19.2% have required admission to an ICU and 4.6% of hospitalized patients have required mechanical ventilation with regional variation.(4)

Reported COVID-19 mortality has varied widely, likely reflecting evolving management expertise, local healthcare system saturation, and variations in testing and reporting capabilities. Currently, Canada's case fatality rate (CFR), which represents the proportion of deaths among individuals diagnosed clinically with COVID-19, is 3.4%.(16) A strong association has been observed between a nation's CFR and the percent population over the age 75 years, with these differences accounting for up to 80% of country-specific mortality variation.(17) Case fatality rates are, however, subject to additional biases including underdetection of community and less severe cases which are often driven by discrepancies in testing and screening capabilities or strategies as those with asymptomatic or mild infection are less likely to be tested, potentially underestimating the true number of cases and overestimating the fatality rate.(18) Thus, these measurements should not be used in isolation and additional metrics such as deaths per population, excess deaths and infection fatality ratios (IFR) should be considered.(18) Currently, IFRs, which in contrast to CFRs estimate the total number of infections based on serologic prevalence studies, are infrequently reported as these data are currently lacking. Ideally, surveillance and testing systems would result in a CFR equal to IFR. Canada's mortality as a proportion of the population is currently 32 deaths per 100,000 people, ranking 44th globally.(16)

Modelling by the Public Health Agency of Canada (PHAC) at the time of writing shows Canada is currently in a period of epidemic growth. Projections based on modelling data have become more accurate as the pandemic has progressed. Early models, during the first wave of the pandemic, simulated best and worst-case scenarios based on data collected from the initial global epicentres. These models were limited by both evolving transmission parameter data and presumed population homogeneity. More recent models have been calibrated toward regional statistics and trends. Important lessons as to the heterogeneous risk of COVID-19 and variations in transmission based on variables such as socioeconomic status, residence (i.e. congregation, long-term care) and ethnicity have and will continue to improve future modelling efforts as the COVID-19 pandemic continues.(19) Current PHAC models predict a continued rise in national case counts over time, with rising rates across most provinces throughout November.

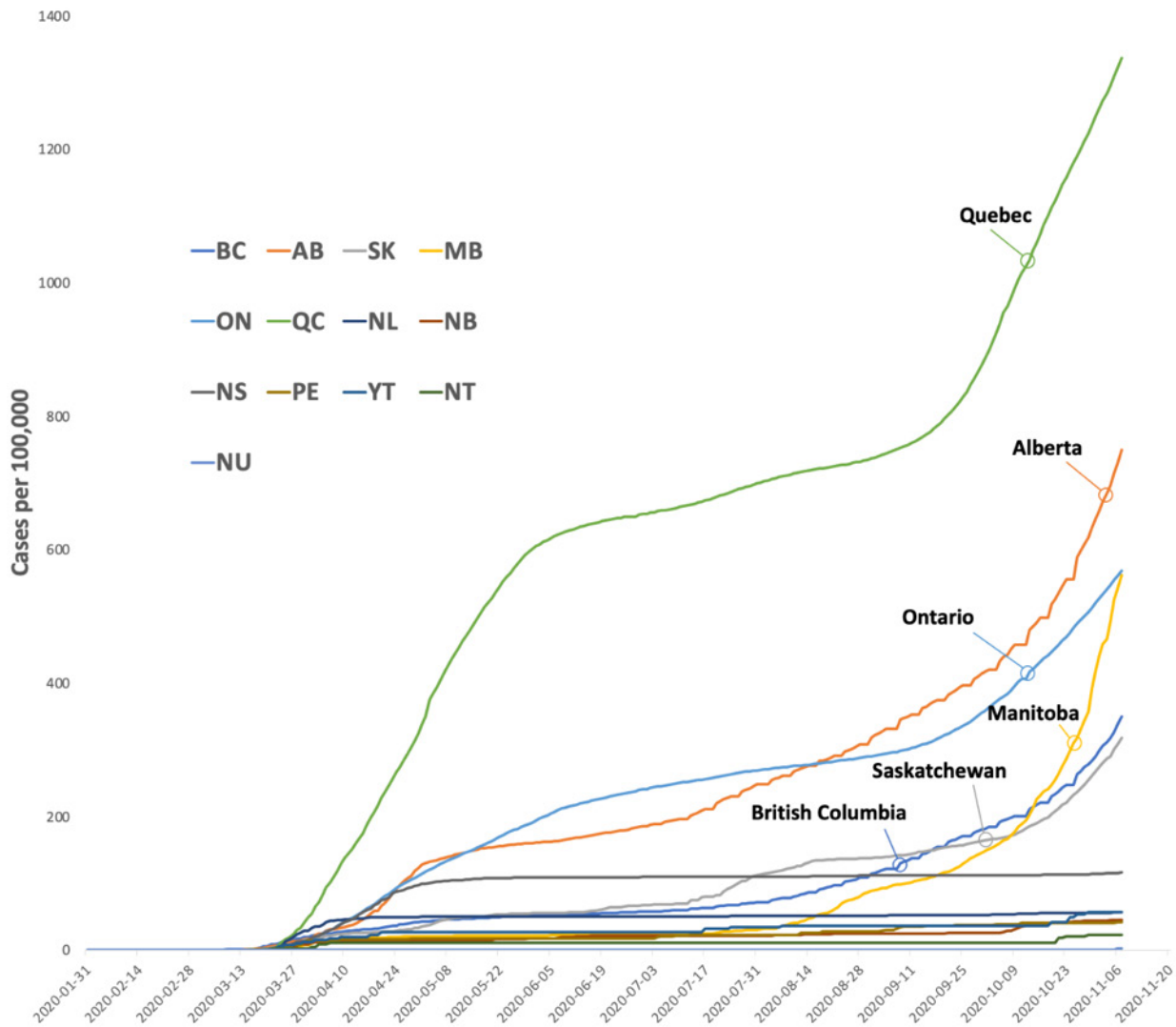


Figure 1. COVID-19 in Canada: Cumulative incidence of COVID-19 cases (per 100,000 population) by province or territory.

Public Health Response and Mitigating Transmission

Key Concepts

During any pandemic, a primary Public Health objective is to mitigate - "to make (it) less severe". The Public Health approach is based on the microbiology of the pathogen in relation to standard public health principles. Given the characteristics of the SARS-CoV-2 virus and the lack of immunity to this novel virus at the outset, the Public Health response to the COVID-19 pandemic has focused on risk reduction at both the individual and community levels.

While public safety is threatened, the medical sciences can assist in gathering and analyzing data and subsequently providing quality evidence to guide decisions. It has been noted, however, that science cannot say whether or not a decision is 'right'. In a democracy, it is up to our elected officials to determine how this data will be used. Furthermore, at the early stages of this pandemic, knowledge and information were incomplete.(20)

In the context of earlier novel coronavirus (SARS and MERS-CoV) outbreaks, amplified spread was observed within healthcare settings.(21) As such, prevention of spread within acute care and other healthcare settings, such as long-term care homes, was seen as paramount. Minimizing community transmission, outside of the healthcare setting, is also important to avoid overwhelming the healthcare system. Flattening the curve aims to keep case numbers low enough that the healthcare system is able to adequately cope. Governments determine the balance of mandates on society and the roll-out of mitigating practices. The societal costs of a lockdown or specific policies (such as mandating masks in public spaces) may be seen as preferable to running the risk of overfilling hospitals.(20)

Occasionally, the balance may lean towards more aggressive mitigation strategies, even if short term, such as the aptly named “circuit breaker”.(22,23) Modeling suggests that with aggressive public health mitigation for a defined period of time, often two to four weeks, viral transmission can be disrupted and allow for healthcare system recovery with improved contact tracing and further control of community transmission. Ultimately, approaches to mitigation depend on risk and therefore may vary over time and place as risk varies. In parts of Canada where risks are low, approaches may differ from other jurisdictions where risks are higher. As risk changes over time, approaches may change within a given province or region.

The microbiology of SARS-CoV-2 is now better understood, in terms of modes of transmission, incubation period and the period of communicability. However, this knowledge did take time to crystalize. As our understanding has grown, recommendations have evolved. Preventative strategies have been based on our knowledge of viral transmission (by droplet/contact spread), high-risk behaviours that amplify transmission and the identification of at-risk or vulnerable populations for severe disease and/or outcomes.(1) The incubation period, or time interval between initial exposure to the virus and appearance of symptoms due to infection, ranges from 1 to 14 days (median of 5 to 6 days).(24) Thereafter, the period of communicability may persist for 10 days. Some individuals can spread virus when pre-symptomatic or asymptomatic (i.e. in the 1-2 days before symptoms start or when symptoms are not apparent).(25) This is critical and makes the containment and mitigation of SARS-CoV-2 much more challenging than previous novel coronaviruses

From a global perspective, in the initial months of the pandemic, the infectivity of the virus (R_0 ; defined in the introductory section) ranged widely and was dependent on the presence or absence of mitigating factors. Through January and February, various outbreaks in China and other countries outside of Canada were noted to be associated with R_0 values ranging from 1.4 to 6.5, with a mean of 3.3.(26) The Diamond Princess cruise ship gained notoriety in February 2020 as host to an early major outbreak outside China, when the ship was quarantined for several weeks. More than 700 passengers and crew were infected with a median R_0 of 2.3.(27)

With mitigation practices, the R_0 can be reduced. General practices employed for mitigation include (i) masking, (ii) social/physical distancing, (iii) handwashing, (iv) cleaning of shared surfaces and objects, (v) optimizing ventilation, and (vi) promoting outdoor interactions. In addition, knowledge of risk and of confirmed positive COVID-19 cases is critical to the application of specific mitigation practices, such as self-isolation and quarantine. As such, screening and testing strategies are also an important component of the Public Health response. Knowing where to focus and augment strategies based on contact tracing also helps to decrease the R_0 and thus decrease new cases. Mitigation can work to reset the R_0 . In the setting of growing case numbers, the R_0 must be brought

down below 1.0 in order to avoid further exponential growth. There are circumstances where the R_0 must be reduced rapidly in order to avoid overwhelming limited healthcare capacity. At such times, aggressive strategies may be warranted but must be balanced against unintended direct and indirect consequences. Such consequences can include social, economic and unrelated health impacts. It should be emphasized, however, that there does not appear to be a simple trade-off between COVID-19 mitigation strategy effectiveness and protecting the economy.(28,29) On the contrary, many countries, such as Taiwan and South Korea, have been successful at controlling COVID-19 while only experiencing relatively modest economic consequences.(28) Conversely, nations less successful at controlling the pandemic, such as Peru and Spain, have experienced more severe economic downturns.(28) Moreover, it has been shown that consumer avoidance in regions of high infection rates affect economic contraction more than official lockdown policies.(30) Thus, it appears that the most effective strategy for economic recovery is to control SARS-CoV-2 transmission through strong, evidence-based, and coordinated public health policy.

Differences between provinces and territories

Provinces vary in geography, population size and density, as well as age and health demographics. The interaction of these variables is complex. As individual provinces and territories have jurisdiction over health care, provinces have differed in their public health approach. There were also differences in the timeframe under which the pandemic struck various regions of the country. The timing of school and border closures also varied as the first wave was being felt in Canada by March 2020.

The first Canadian cases were identified in late-January and February in relation to travel from the region of the global epicentre in China's Hubei province and subsequently from other regions of the globe where COVID-19 cases were climbing; including Iran, Egypt, India and Hong Kong.(31) Ontario, British Columbia and Quebec were the first provinces with cases and have the largest and most centralized populations. As of March 3, there were 33 confirmed cases of COVID-19 with 20 cases reported in Ontario, 12 in British Columbia and one in Quebec.

As case numbers were increasing and nearing 100 cases on March 10, the federal government issued recommendations for the adoption of work-from-home policies.(32) On March 13, gatherings of more than 250 people were no longer permitted in Alberta or Ontario. On March 14, recreation facilities and entertainment venues closed in Newfoundland and Labrador. On March 16, British Columbia began to limit access to acute and long-term care facilities and postponed non-urgent and elective surgeries.

On March 12, Quebec was one of the first provinces to announce school closure beginning March 16.(33) New Brunswick, Alberta, and the Northwest Territories closed schools on the same date.(32) British Columbia, Newfoundland and Labrador and Nunavut followed suit on March 17. Ontario, Nova Scotia, Prince Edward Island and the Yukon Territory announced school closures the same week as students were beginning their March break, and thus students did not return to classes on March 23 as would have been planned. Saskatchewan and Manitoba delayed closures until March 20 and 23 respectively. The impact of school closure on mitigating transmission remains unclear and will be discussed in a later section. In general, confirmed cases among school-aged children attending schools seem to be representative of transmission within the community, rather than transmission within schools.

With regards to travel and border restrictions, the federal government put out a travel advisory warning against all non-essential travel outside of Canada on March 14.(32) Four days later, travel restrictions were announced on entry of all foreign nationals, with the exception of the United States. This remained in place until three days later when the United States was added to the restriction. Subsequently, mandatory self-isolation was required for all travelers arriving from outside Canada on March 24. During the first wave, no additional isolation requirements or travel restrictions were put in place for British Columbia, Alberta, Ontario or Quebec, beyond those imposed by the Federal Government of Canada. Mandatory 14-day self-isolation for those returning from out-of-territory or province, however, were implemented in Nunavut, Northwest Territories, Yukon, Saskatchewan and the Atlantic provinces.(32) In fact it should be noted that the Atlantic ‘bubble’ gained international attention as one of the safest places during the pandemic. (34)

As a result of the mandatory 14-day isolation period following entry instituted in late March, the Atlantic provinces enjoyed relatively low case counts. Newfoundland and Labrador did see a spike in cases in early April following a super spreader event at a funeral home in mid-March.(35) The province’s active case count peaked at 253 on April 18 and subsequently fell precipitously to low levels that have been maintained well into the second wave.(4) Prince Edward Island and Nova Scotia saw their first waves peak on the same day with active case counts of 26 and 602 cases, respectively. The epicentre of Nova Scotia’s first wave was the largest long-term care home in Atlantic Canada, located in Halifax. During the outbreak, 246 residents and 99 staff were infected and 53 people in the facility died. As of the end of June, these deaths accounted for 84% of COVID-19 deaths in the province.(36)

New Brunswick had similar success through the first wave. The province’s active case count peaked on April 3 at 72 cases. Case numbers remained low until June when an outbreak occurred in the north of the province along the Quebec border, involving a long-term care home. During the outbreak, with intense public health mitigation and contact tracing, the active case count did not rise above 29 cases at any one time.(37)

As the situation stabilized in the Atlantic region, by July 3 there were just 5 active cases in the region.(4) On this date, the Atlantic bubble was declared a unique travel-restricted zone. With agreement among the four Atlantic provinces, unrestricted travel was permitted among these four provinces. Individuals travelling into the bubble were subject to screening and required to quarantine for 14 days before moving freely within the bubble.

As mentioned, Ontario and Quebec were among the Canadian provinces hit the earliest and the hardest by COVID-19. Based on confirmed cases and hospitalizations, by raw numbers or a per capita comparison, the cases grew steadily in Ontario and Quebec. British Columbia, however, fared much better, due in part to their integration of laboratory services with public health epidemiology.(38,39)

High population density may have contributed to the higher case incidence in Ontario and Quebec. In addition, Quebec was at a disadvantage with spring break taking place earlier than in other provinces, at a time when returning travelers and imported infections were driving Canada’s epidemic. These and other factors, including local outbreaks, helped to ignite more widespread outbreak in the two most populated Canadian provinces. By May 4, there were 60,615 confirmed

cases of COVID-19 across Canada with Quebec and Ontario accounting for 83% of these cases, and 92% of the nation's deaths.(40)

With sustained community transmission and a rapid rise in cases, Quebec and Ontario were struggling to provide adequate levels of testing.(40) In many provinces, there were barriers to assuring widespread accessible testing, including supply of necessary swabs, testing reagents, staffing and needed infrastructure. Contact tracing teams also needed to be scaled up. In mid-May, concerns were raised that some provinces were reopening schools, daycares and retail stores despite not being able to ensure adequate contact tracing, which is a critical component of the overarching mitigation strategy.

While Ontario and Quebec were not meeting testing targets and unable to determine the source of thousands of cases, in contrast Alberta and British Columbia were reported to be doing well with testing and contact tracing. Alberta excelled at ensuring widespread testing. Alberta had expanded to explore asymptomatic testing early on in the pandemic. In late-May, Quebec began to plan their reopening while promoting physical distancing and masks as key public mitigation strategies.

Overall, the first wave began to decline and by June 1, 2020 Canada reported the lowest daily death toll in two months at just 31 new deaths and 759 new confirmed infections. Provinces and territories began to relax restrictions.(40) Canada's chief public health officer warned that reopening too quickly could lead to a rapid increase in new cases.(41) Furthermore, second waves of epidemics are frequently worse than the first and caution was warranted.(23,42)

In late-August, a slight upward trend in case numbers was noted and by early-September, case numbers were clearly on the rise across the country. By late-October and early November, all provinces and territories, with the exception of the Atlantic provinces, were seeing case numbers that surpassed the peak of the first wave. As of December 4, there were 69,977 active cases across the country with a 7-day case count of 116/100,000 population, more than tripling the national peak during the first wave at 33/100 000 on May 5.(4) Noting that a primary public health goal is to maintain the caseload within the capacity of the healthcare system, between November 7 and 14 the number of hospital beds occupied by COVID-19 patients increased from 1033 to 1375; the number of ICU beds occupied by COVID-19 patients increased from 254 to 355; and the number of COVID-19 patients who were mechanically ventilated increased from 96 to 149.(4) Interestingly, at that time, the acute care utilization numbers were below that of the peak of the first wave. These higher case numbers, yet lower acute care utilization, were due to the fact that in the early stages of the second wave, a higher proportion of cases were among a younger demographic that were at lower risk of severe disease. The 7-day mortality in Canada peaked at 3/100,000 during the first wave in early-May. As of December 4, with cases climbing in the second wave, the 7-day mortality was still less than 2/100,000 population.

While Canadian cases were driven by Ontario and Quebec in the first wave, the country saw a shift during the second wave with the prairie provinces experiencing the highest number of cases per 100,000 population. During the first wave, Ontario's 7-day case count peaked at 27/100,000 on April 26, while Quebec's rate exceeded 3 times this just several days later.(4) As of November 21, Ontario and Quebec had recorded 7-day case counts of 66/100,000 and 97/100,000, however these were dwarfed by the prairie provinces which experienced much higher increases in case counts. Of exceptional note was the 7-day case rate seen in Nunavut of 271/100,000.

Nunavut presents a unique approach to mitigation and an interesting pattern of cases. The territory had been quite aggressive with travel restrictions. As of March 25, air entry into Nunavut by non-residents was prohibited, with few exemptions. Returning residents faced a 14-day quarantine with tight monitoring before returning by air.(43) Of Nunavut's 24 hamlets, some went so far as to prohibit outside visitors from other regions within the territory.(44) Temporary restrictions on consumption, possession, or distribution of alcohol were also implemented by some hamlets in order to minimize social gatherings and ensure adherence to public health measures.(45)

Until early-November, Nunavut was the only province or territory in Canada that had not recorded a confirmed COVID-19 case. However, on November 6, the territory reported its first case, followed by a large spike in cases. On November 16, Nunavut issued a territory-wide two-week shutdown. It appeared that initial cases were linked to an isolation hub in Winnipeg with subsequent community transmission driven by overcrowding within the territory's communities.(46) Nunavut's seven-day case rate peaked on November 23 at 289/100,000.(4) While the territory had been untouched through the country's first wave, the early stages of the second wave presented a very different story. A major driver of Nunavut's trends appears to be its geography and the flow of the population. Although the territory has very low population density overall, the small communities are densely populated with close interactions among the community members, facilitating widespread transmission once in the community.

As was seen in Nunavut, other Canadian regions that did well during the first wave struggled in the early stages of the second wave. As noted, the prairie provinces have seen a troubling spike in cases with challenges in hospital capacity.(47–49) The Atlantic bubble also managed to control the pandemic in the first wave, but felt the stress of cracks in the border restrictions and COVID-19 fatigue within the communities. The bubble officially burst late November with rising cases, up to as high as 153 per 100,000 in Nova Scotia on December 31, 2020.(50)

Masking Policies

Among general mitigating practices, such as physical distancing, hand washing and disinfecting, masking has been a somewhat contentious issue. Although masking has been used to decrease the risk of transmission and acquisition of respiratory viruses within the healthcare setting for decades prior to COVID-19, it is generally used as a component of a larger bundle of preventive practices and the risk reduction associated with mask use by itself is difficult to ascertain.(51) Furthermore, mask use in the community has been associated with different types of masks with different rates of adherence and differing community case rates, thus further confounding analyses.

Nonetheless, mathematical modeling suggests that universal masking within the general public has a significant impact on reducing not only infection to the wearer but also subsequent community transmission.(52,53) Recent meta-analyses estimate masks decrease person-to-person transmission by 40% to 85%, with one study suggesting comparable effectiveness of medical and non-medical masks at 43% and 40%, respectively.(52,54) The benefits of universal masking are significant, with an estimated 11,350 Canadian deaths averted over a 4-month period with universal masking.(53)

Different types of masks also result in varying levels of protection against transmission. N95's are the most protective and should be used when aerosol-generating procedures are being performed by health care providers. Outside of this context, however, medical masks are acceptable to reduce the risk of droplet spread in combination with other mitigating practices such as hand hygiene and

cleaning high touch surfaces. Non-medical (cloth) masks (NMMs) can also reduce transmission risk, however, there is variability among these masks and their proper use. Three-layer masks that cover the mouth and nose are recommended for use by PHAC, though masking in general is preferred to reduce risk over no mask at all, regardless of mask design.⁽⁵⁵⁾ There is limited evidence of harm related to mask wearing and generally, mask use outweighs perceived harm.

On May 20, 2020, PHAC recommended the use of masks where maintaining a 2-metre physical distance is not possible. Although most of the country was initially hesitant to adopt mandatory masking policies, most provinces now require masking in indoor public spaces. Quebec was the first province to require wearing of NMMs in all indoor public spaces on July 17. With rising cases across the country, most provinces followed suit.^(56–59)

Some jurisdictions have had narrower mandates at different times during the pandemic. In Alberta, masking was made mandatory in all places of worship and in all indoor workplaces, but only in the Calgary and Edmonton areas.⁽⁶⁰⁾ Masks only became mandatory in British Columbia healthcare facilities as of November 4.⁽⁶¹⁾ In addition, mandatory masking policies in the Northwest Territories, Nunavut and the Yukon were selective (not universal) or only strongly recommended at the time of writing.^(62–64)

As has been noted, mitigation strategies are employed to reduce risk, and as such, where risks differ, mitigation may differ. As an example, in New Brunswick the mandating of NMMs was extended to outdoor public spaces in zones where community transmission was documented and accelerating. Such mandates have also been enforced by fines in New Brunswick.⁽⁶⁵⁾

Testing Strategies

Knowledge of risk and of confirmed positive COVID-19 cases is vital to mitigation practices, such as self-isolation and quarantine.⁽⁶⁶⁾ It is noted that there are different modalities of testing, such as direct testing to look for evidence of the virus (SARS-CoV-2) which is done most often with polymerase chain reaction (PCR) testing or antigen detection. There are also indirect methods of testing which can sometimes be used to look for the body's response to a potential prior exposure to the virus, such as serological testing.. This section focuses on the role of these direct tests to look for evidence of the SARS-CoV-2 virus in order to determine the presence of an infection.

Testing informs knowledge of community case prevalence and can aid in identifying hotspots where mitigating practices can be strategically emphasized. Testing also allows for appropriate case finding which guides contact tracing, which is essential in reducing further exposures and breaking cycles of transmission. There is general agreement that widespread testing, in conjunction with aggressive contact tracing, is essential to containment. Some public health authorities have utilized what some label as “backward contact tracing” in addition to traditional (forward) strategies to determine the origin of infection. Given the propensity for super-spreader events with SARS-CoV-2, backward tracing improves the detection of these infection clusters and informs public health policy on high transmission risk settings.

It is critical that amplification of cases be prevented within healthcare settings due to the critical service provided in those settings, the vulnerable populations served in health settings, and the need for increased capacity of health services during a pandemic. Through identification of positive cases, hospital patients and care home residents can be placed in appropriately designated rooms/wards with relevant transmission-based precautions in place. Healthcare workers may also

be selectively screened in order to minimize unintended workplace transmission. For reasons of preventing amplification of cases, accessibility to testing must also be strategic.

Accessing testing through acute care centres or emergency departments is problematic unless individuals can be effectively triaged and streamed into safe, expanded and designated areas to avoid crowding, transmission, super-spreading events or outbreaks within hospitals. As such, access to testing in an appropriately designed and designated community setting is preferred. As the country headed into a time of year that traditionally sees increased spread of community respiratory viruses such as influenza, the development of respiratory assessment centres outside of traditional healthcare settings were deemed to be of significant value.

Early adaptation and implementation of effective COVID-19 testing strategies by Canadian provinces were essential to early, successful control of the pandemic during the initial wave. Overall, Canada did well in this regard. In contrast, the United States experienced a disproportionately steeper rise in infections, which was at least in part due to a failure to implement accessible early testing. Early efforts by the Centre of Disease Control (CDC) were reported to have been negatively impacted by distribution of faulty test kits.(67,68) Sensitive testing criteria and access to testing for all eligible people ensures that fewer cases are missed. Due to resource constraints, such criteria must be thoughtful and evidence-based, and are expected to evolve over the course of the pandemic.

During the first wave, a standard short screening list was used in most parts of the country, including the presence of fever, new cough or worsening chronic cough in combination with epidemiologic risk factors. In many provinces testing initially targeted only symptomatic individuals. Alberta later included testing of asymptomatic individuals and has led the country in per capita testing, performing 3950 tests per 100 000 population since January, six times the number of tests per COVID-19 death relative to Ontario.(40) However, as the proportion of positive cases had been very low in Alberta, employing this strategy was deemed ineffective in the face of utilizing limited resources. As such, the strategy later returned to targeting individuals based on selected symptoms.

The percent positivity of tests is the percentage of all tests performed that are found to be positive. This number can be used as an indicator of how widespread infection is in a defined area, and policymakers may use this information to guide decisions on relaxing or tightening pandemic restrictions.(69) In May, the WHO recommended that the percent positivity of tests remain below 5% for at least two weeks before a region re-opens, though the threshold may vary by region and over time. As of early May, more than 13% of tests in Quebec were positive, indicating widespread transmission.(40) This measurement later fell through the summer months, only to increase again in the fall as the second wave hit.(70)

As of mid-November, the Government of Quebec noted that the province's testing strategy was taking the context of each region into account.(71) The number of tests available in each region was calculated based on population size, in addition to community transmission intensity. Designated testing and assessment clinics as well as mobile clinics were set up to enable access to testing, targeting symptomatic individuals, close contacts of positive cases, and those asked by public health for testing.

In Nova Scotia, the criteria for screening expanded at the end of the first wave to include an expanded list of thirteen symptoms, with the rationale that a very low threshold for testing was

desired. In late-August the province transitioned to a shortened symptom list based on review of case presentations across the country as well as low percent positivity of testing in the province (Personal communication D. Webster, Dr R. Strang [Chief Medical Officer of Health]; November 11, 2020). With the percent positivity of testing being very low (0.95% as of November 10) the province instituted an innovative testing strategy on November 21 to increase case finding.(72) They utilized an empty nightclub in Halifax to target a cohort seen to be driving new cases.(73) This pop-up testing site used a rapid antigen detection test. Although a less sensitive test with a higher false-negative, it did allow for on-site targeting of a high-risk population that may otherwise have gone without testing. Positive results were followed up with confirmatory PCR.

In areas of low prevalence, screening can also serve an important role, ensuring adequate surveillance to identify the introduction of cases into a region. In New Brunswick, where case numbers have been generally low, modeling suggests that with a provincial population of 750,000 and case prevalence of 0.1%, 3000 people should be tested over a given time period to ensure cases are not being missed (Personal communication D. Webster, Dr D Dutton [Department of Community Health and Epidemiology, Faculty of Medicine, Dalhousie University]; April 20, 2020). As such, in provinces with low case rates and low community transmission, access to testing may be more open, to ensure adequate surveillance and case finding. In New Brunswick, asymptomatic testing has been available to vulnerable groups and those at risk of importing cases or transmitting cases at sites of concern.(74) Limited sentinel testing of asymptomatic patients is also performed in emergency departments and hospitals in the province (Personal communication D. Webster, P. Higdon [Director, Provincial COVID-19 Response Team. NB Department of Health]; November 12, 2020). As of November 10, the percent positivity of tests in New Brunswick was 0.33%.(37)

In early November, Manitoba was the province with the highest case rate in the country at 394/100,00 and a test percent positivity of 3.06%.(75) As case numbers were climbing, it was announced that Manitoba had received rapid test devices and supplies. Based on public health advice, most devices were to be located in remote communities, where delays due to transportation, weather and other factors may impact access to traditional testing.(76) The hope is that rapid testing will help to bend the curve as we move into the winter months, through early case identification and prevention of transmission.

COVID-19 in Canadian Workplaces

In Canada, COVID-19 has been acquired in places of work. When SARS-CoV-2 enters a work setting there is risk for spread to others (transmission of infection) and for outbreak. Key themes have emerged over the course of the COVID-19 pandemic in Canada. These themes highlight areas of risk in places of work, but data on whether infections are occupationally acquired are sparse, and the available data can be challenging to interpret, or even misleading.

Canada does not currently have nationally standardized public reporting of occupationally acquired infections. Variations in reporting on testing, infections, or outbreaks amongst workers exist across provinces and territories. In addition, after a worker acquires infection, the likelihood that infection was acquired at work will remain unknown unless there is a detailed case investigation, ideally performed at the time of the infection. In Canada, similar to many other countries, information about infections from workplace settings comes primarily from published outbreaks and media reports.(3,77)

The PHAC uses web scraping techniques to gather data from media reports about outbreaks, in addition to data shared via provincial and territorial health agency internet sites.(3) This information can be used to help explore which Canadians may be getting infected at work, but the aggregated anonymized data are subject to important limitations which are highlighted in the PHAC weekly epidemiology report technical notes.(3) The data do not represent all outbreaks that have occurred in Canada over the course of the pandemic, and case-level data are generally not available for these outbreaks as the data sources are not traditional and reporting is not standardized.

The story of healthcare workers (HCWs) in Canada can be used as an example to illustrate relevant key points to better understand worker epidemiology in Canada.

Healthcare workers

Transmission settings, percent positivity, testing rates and incidence of infection

Early on in the pandemic it was assumed by some that HCWs would be at greater risk than the general public for COVID-19 infection. Indeed, early reports suggested they were, and to this day, absolute numbers alone could give a strong but likely false impression that they are at higher risk of acquiring infection based on their site of work.

For example, data summarized in a September 3, 2020 Canadian Institute for Health Information report are coupled with footnote comments to explain that the data are intended to represent HCW infections acquired at work, but the data could include HCWs who acquired infection outside of work.(78) This report notes that the comparability of the data from provinces and territories is impacted by differences in their overall COVID-19 testing practices (this is referred to as testing bias); and that the data are from multiple and variable sources ranging from formal provincial reporting to media summaries. The report table states that as of July 23, 2020, 21,842/112,672 (19%) of all Canadian COVID-19 cases were in HCWs (78).

Two key points stand out when considering these data:

1. The absolute number of cases tell nothing about where or how the infections were acquired; and
2. Access to testing for SARS-CoV-2 has not been the same for everyone. Over the course of the pandemic, access to testing has been variable; and at times preferential in many jurisdictions. For example, early on in the pandemic some provinces allowed HCWs to be tested for COVID-19, but not other categories of workers. Some provinces only allowed travellers to be tested in the early weeks of the pandemic. Most provinces have allowed preferential access to testing for healthcare workers throughout the pandemic, but many other industries either did not have access to testing or the testing was organized outside of a public surveillance system.(79,80)

To address these comparability concerns, rather than looking at absolute numbers, information pertaining to three coupled metrics, namely, the **percent positivity** (the percent of tested healthcare workers who test “positive” for the infection); the **testing rate** per 1,000 – 100,000; and the **infection rate** per 1,000 - 100,000 as compared with the general population is preferred. A challenge for some employers, organizations or policy makers is that test and infection data, or accurate population denominators are not always available for epidemiological study or reporting.

The province of Alberta has Canada’s largest integrated health system and was thus well positioned to address this issue. The Workplace Health and Safety program within Alberta Health Services launched a HCW testing and infection dashboard which has enabled the organization to report items such as the HCW percent positivity, testing rates, and infection rates throughout the pandemic to their frontline workforce. In addition, the estimated cause for infections amongst HCWs is being established for each case by using standardized questionnaires to interview infected HCWs and a case review format to classify cases. This work is demonstrating that the majority of these HCW infections have most likely been acquired outside the healthcare workplace. For example, data from the first ten weeks in Alberta’s COVID-19 epidemic from the start (March 5, 2020) to the date of provincial re-launch and re-opening after shutdowns (May 14, 2020), showed that access to testing was higher amongst HCWs [20,920 out of 118,733 HCWs (17.6%) were tested for SARS-CoV-2] than the general population of Alberta [188,514/4,441,289 (4.2%)]; but the percent positivity of those HCWs tested [209/20,920 (1.0%) tested positive] was lower than that of the general population [5,783/188,514 (3.1%)].(81) In addition, the overwhelming majority of infections amongst HCWs were acquired outside the workplace [161/209 (77.0%) were categorized as having infection due to a non-occupational source]. The median age of infected employees was 41 years with an interquartile range of 33 - 50 years (Personal communication R. Harrison, S. Tsekrekos; Alberta Health Services Workplace Health and Safety).

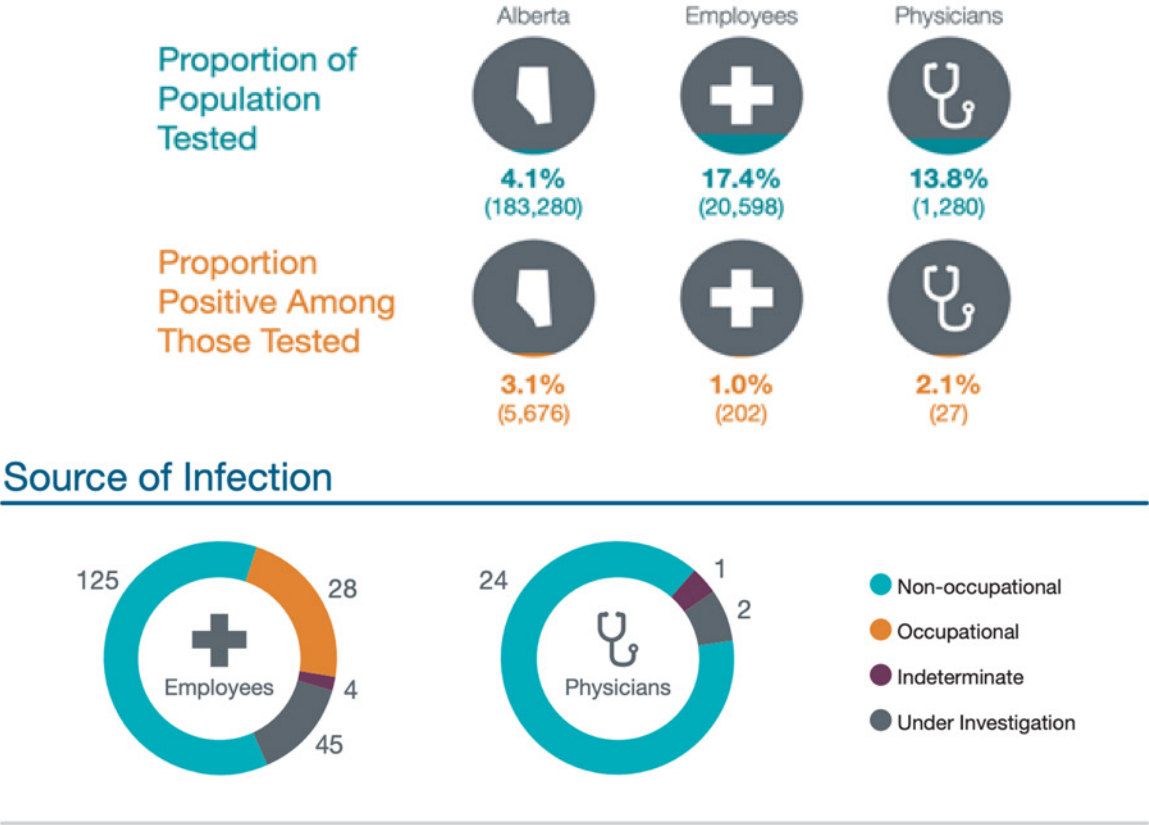


Figure 2. The Alberta Health Services Healthcare Worker Testing Dashboard Infographic at the date of provincial re-launch after a lock down period (May 14, 2020).

(Image credit: Derek Shimosawa, Creative Lead, Alberta Health Services Community Engagement and Communications; and the Alberta Health Services Communications Team)

These findings underscored the importance of ensuring HCWs are informed about their risks for acquiring infection in community settings. In addition, they are reminded to practise hand hygiene, physical distancing, masking, isolation when ill, or quarantine when identified as a contact, and adhere to all public health recommendations in the community as well as at work.

Similar findings to those reported by the Alberta program, have also been described from Ontario according to a preprint manuscript (Note: A preprint manuscript means that these findings are not yet peer reviewed or published in a scientific journal).(82) The Ontario work was done using retrospective data and is hence subject to limitations. It should be noted that it was learned early in the pandemic that HCWs represented a disproportionate number of COVID-19 cases in Ontario but with relatively low confirmed numbers of workplace acquired infections. The analysis and stated conclusions by Schwartz et al. in the pre-print article comment on areas of risk such as co-worker to co-worker transmission.(82) Protecting HCWs through appropriate personal protective equipment and physical distancing from colleagues is a key learning point stated in the pre-print report.(82) Officials in the province of British Columbia have also highlighted the need to present data with adequate detail and context for meaningful interpretation, particularly when it comes to infections amongst HCWs.(83)

Real time dashboard reporting, like the Alberta model, or analyses such as that proposed by the Ontario group, can facilitate transparent, and informed communication to frontline workers which may help to ensure their psychological well-being. The Alberta Health Services HCW Testing and Infection Dashboard is also assisting in clarifying areas of risk for workers that guide protective policies. If others are able to establish similar reporting in the future, then it would allow for comparisons across jurisdictions.

Business, Industry, Public Service Settings, and Outbreaks

Further to the HCW stories, however diverse the experiences, every business, industry and service sector has been impacted in some way by the COVID-19 pandemic. The outbreak data compiled by PHAC highlight key areas where occupational risk was observed over the first many months of the pandemic and point to closed (e.g. indoors, poorly ventilated) and crowded settings as areas of risk.(3)

Many provinces including Ontario, Manitoba, Saskatchewan, and Alberta are publicly reporting current outbreaks by location/setting on government websites.(81,84–86) The province of British Columbia reports healthcare location outbreaks and the Atlantic provinces, B.C., and Yukon and the Northwest Territories all list exposure venues on their provincial government websites.(87–93) The province of Québec summarizes outbreaks by category/setting type.(70) School settings are also reported in many provinces. Most often, once an outbreak is over it disappears from the published website lists, but a scan on any given day highlights that the virus has not gone away, and outbreaks continue to be observed across a range of settings.

Early in the pandemic Canadian long-term care facilities, retirement residences, and congregate living settings pre-dominated and accounted for the majority of outbreaks. Since that time, outbreaks have been detected in businesses, and agricultural work settings, amongst farm workers, in meat processing plants, in acute care hospitals, and in institutions such as correctional facilities. Since September 2020, long-term care/retirement residences and schools/childcare centres continue to account for the highest number of reported outbreaks in Canada.(3)

The Canadian military Department of National Defense and Canadian Armed Forces report that 490 military personnel have been infected in the COVID-19 pandemic as of November 30, 2020. (94) The denominator for the military workforce, and the estimated source for the infections amongst military personnel (i.e. workplace or community related) are not published on the national website.(94) From the Canadian Institute for Health Information HCW data it is evident that 55 of those 490 military personnel were estimated to have had COVID-19 infection linked to long-term care home outbreak work done through an operation called operation LASER in Ontario and Quebec (prior to July 7, 2020).(95)

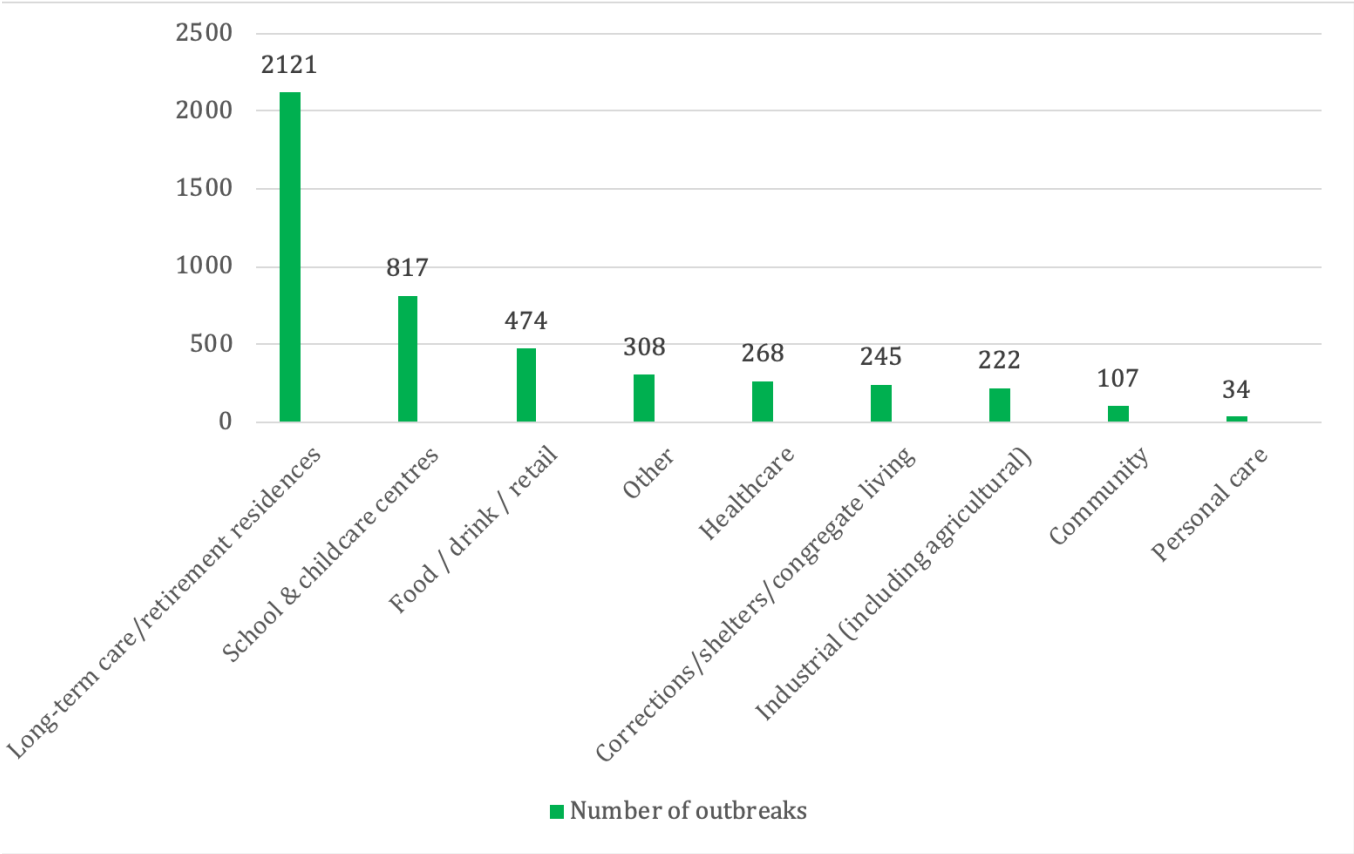


Figure 3. The number of outbreaks in Canada by setting from March 12, 2020 to November 14, 2020 as compiled by the Public Health Agency of Canada.

Note: In Figure 3, “other” refers to social gatherings, office workplaces or recreational facilities. “Personal care” refers to items such as hair salons, or nail care etc. “Healthcare” refers to settings such as acute care settings, and healthcare settings apart from long-term care. Correctional facilities are labelled as “Corrections” in Figure 3. These data do not distinguish between provincial and federal correctional facilities. “Industrial settings” includes food processing plants. The categories presented in this graph are those shared by the Public Health Agency of Canada at the time of writing.

It becomes clear when looking at the diversity of work settings reporting outbreaks that key considerations for protection of workers must apply broadly. Prevention opportunities including access to testing, adequate and stringently monitored protections for workers at work; availability of PPE; sick day policies and job security; the ability or inability to live and/or work from home have not been equal across settings. Fear of income or job loss impacts some populations

disproportionately when compared to others. This in turn can impact their desire or ability to seek testing, or to participate safely in test-trace-isolation strategies. Not only does this affect individual Canadians, but it also affects the overall public health response that is critical to controlling the pandemic, and it carries significant financial and operational impact for industries as a whole.

It should also be noted that Canada's largest outbreaks early in the pandemic occurred in long-term care facilities and in industrial settings, specifically, food processing plants. Outbreak size matters. Information relating to the number of cases linked to outbreaks is important and should be available. Knowledge of this can help to improve early outbreak detection mechanisms, and to detail the swift actions that are required in order to prevent further spread.

Four key questions emerge whenever using outbreak data to learn where occupational risk exists:

1. How are outbreaks being defined?
2. Are the staff and workers getting infected in the outbreaks or not? (For example, is it customers, students or patients that are infected, or are the workers infected too?)
3. If workers are infected, are they getting infected at work or outside of work?
4. How can risk be prevented and mitigated?

At present, there is not a nationally standardized COVID-19 outbreak definition in Canada, and therefore variability exists across provinces and territories or regions and settings. In broad terms, an outbreak is a clustering of cases (infected individuals) in space and time. Most outbreaks consist of at least two (often more) COVID-19 infected individuals and suspicion or evidence of transmission between those individuals. Variability in defining what constitutes an outbreak means that clusters of cases in some settings or in some jurisdictions may not be reported as an outbreak and therefore data (such as the number of outbreaks by settings summarized in the weekly PHAC epidemiology report and in Figure 3) likely under-report the number of outbreaks that are occurring and do not identify all areas of risk.(3)

In addition, attempts at comparisons when looking at absolute numbers of outbreaks are hindered due to variability in outbreak definitions. For example, in Alberta an outbreak in a long-term care setting may be declared with a single case, whereas a business setting outbreak is not declared until there are 10 cases or more.(81) In contrast, in Ontario, outbreaks in businesses may be declared when there are 2 or more cases within 14 days.(96)

It has been learned from detailed outbreak work and epidemiological mapping of cases that numbers, percentages, and rates alone can be misleading. It is the stories behind the numbers that shed light and clarity on areas of risk.

For example, the workday break time moments, the travel times, and workday meetings are sometimes identified as cause for transmission between workers. Learning why workers who are ill might still come to work is critical to understand as well. This information is best learned through epidemiological mapping of outbreaks and detailed interviews with workers collected in real-time.

In some outbreaks, it has been learned through contact tracing and cross referencing of worker interviews that there are factors that contribute to infection transmission which extend beyond the place of work (e.g. carpooling or living in crowded living quarters; or workers who live together). These factors can also contribute to the size of workplace outbreaks.

As case numbers rise, if public health and contact tracing teams are stretched beyond capacity, then opportunities for learning through outbreaks will become increasingly challenging in Canadian settings. The fundamental approach of “test-trace-isolate” (meaning: testing anyone with symptoms; contacting those that were in contact with the ill; and quarantining those individuals exposed to the ill and isolating those individuals who are ill in order to protect others) is required to glean best estimates of where and when transmission events occurred and what factors contributed to those events.

Further to a call for transparent data on occupational infections in the province of Québec, the Institut National de Santé Publique du Québec (INSPC) released data and a report outlining trends in new COVID-19 cases that are linked to workplace settings.⁽⁹⁷⁾ Media headlines suggest the findings illustrate that almost 30% of new COVID-19 cases in Quebec are linked to workplace outbreaks and that there has been an upward trend since September 2020 in this regard. The data reportedly also point to specific industries and businesses such as manufacturing, retail, restaurants and accommodations. Reports and data like this can help to shape and further policy; and when adequate detail can be obtained from individual case and outbreak analyses then prevention measures can be refined as best as possible.

Mitigating risk day-to-day in workplace settings

A tour of published workplace outbreaks from around the country reveals trends and illuminates areas for particular attention. Workers and management teams are advised to avoid what the World Health Organization (WHO) and PHAC label as ***‘Three Cs’: crowded spaces, confined spaces, and close person-to-person contact.***^(98,99) This applies to times when workers are on the job, on break times, and in the community. Knowledge of this, combined with a better understanding of the challenges workers face, help to hone present day public health and infection prevention messages. It also underscores why no single prevention measure stands alone.

Translated, the ***‘Three Cs’*** means that risk of the disease spreading from one person to another in work settings is lower:

- when outdoors;
- when hand washing is routinely and correctly performed (20 seconds with alcohol-based hand rubs or soap and water);
- when people are spaced two metres apart (physical distancing);
- when fewer individuals mix in-person (virtual is the way to go when possible);
- when anyone sick is supported to speak honestly and stay home from work (preventing importation of infection into the workplace);
- when those ill have access to COVID-19 testing and tracing (so that others can be placed on quarantine when applicable to prevent outbreak); and,
- when multilayer masks are worn by everyone. Personal protective equipment such as a mask is certainly not new to industry, but its placement in break room settings or at business meetings or during travel is novel to most.

Experience from the first ten months of Canada’s epidemic can be used to help to focus the next best steps in procuring, organizing, and analyzing data for the protection of workers and services and the community at large in Canada. Lessons learned could be formalized and standardized to

ensure we are even better prepared to direct policy, actions, and resources for the next epidemic; and in order to meet the overarching goals to protect working Canadians in the workplace, home, and community settings.

COVID-19 in Long-term Care in Canada

The COVID-19 pandemic has had a devastating impact on residents and staff of long-term care homes (LTCH). In Canada, LTCHs in most provinces have been affected, and Ontario and Quebec have been particularly hard hit. In Ontario, in wave 1, 55% of all LTCHs experienced at least one COVID-19 outbreak, and outbreaks have continued in wave 2.(100) Outbreaks have involved both residents and staff working in the Homes, and to date, residents of LTCHs have accounted for approximately 80% of all COVID-19 related deaths in Canada.(101) The frequency, size and scale of COVID-19 outbreaks were, and continue to be, unprecedented. Reasons for this are multifactorial and complex, but involve delays in preparation, longstanding system challenges in the sector, as well as underlying resident factors. Outbreaks frequently overwhelm the local LTCH's ability to respond, requiring a larger system response; in the case of Québec and Ontario, even the military. The clinical presentation of COVID-19 infection varies widely in this population; morbidity and mortality in LTCH residents is high.

Delayed Preparation

When COVID-19 first emerged as a novel pathogen, the health system response focused primarily on hospital preparedness. Infected travelers returning to Canada were expected to present to hospitals. Media and news stories from China and then Italy focused on acute care hospitals becoming overwhelmed with patients. It was not until COVID-19 arrived in North America that the full potential impact of COVID-19 outbreaks on LTCHs was realized. This was likely due to differences in cultures and relative lack of LTCHs in the previously affected countries. When the first LTCH COVID-19 outbreak in Washington State was declared COVID-19 guidance documents for this setting did not yet exist.(102,103) COVID-19 moved through North America before LTCHs could prepare. There was not enough time to stockpile personal protective equipment, or update and operationalize pandemic plans. Importantly, pre-existing gaps in infection prevention and control (IPAC) practices could not be overcome. The degree of preparedness likely varied by LTCH and by jurisdiction, and some provinces and territories with better public health support for this sector may have been better prepared than others.

Systemic Gaps

COVID-19 exposed longstanding systemic challenges within the LTCH sector. Many LTCH's lacked the IPAC education, knowledge and capacity critical to pandemic planning and infection prevention. (104) Few had infection prevention and control (IPAC) specialists on the ground educating staff on essential protocols including appropriate selection, as well as donning and doffing, of personal protective equipment. In many cases, staff and resident syndromic surveillance systems did not exist, and there was limited access to timely and comprehensive COVID-19 testing.(105,106)

Even once LTCHs were able to access the personal protective equipment they needed, implemented universal masking of staff and visitors, and had improved access to testing, outbreaks have continued. Older infrastructure and multi-bedded ward rooms (and a paucity of bathrooms) make it difficult, if not impossible, to mitigate spread once COVID-19 enters the LTCHs.(107) LTCHs

typically do not have empty rooms to allow for movement of residents into isolation in the event someone becomes ill.(108) For-profit status is also a predictor of magnitude of LTCH outbreaks, in terms of numbers of residents affected and mortality.(109) It is hypothesized that the main driver of these worse outcomes is the higher proportion of for profit homes that have older infrastructure including multi-bedded ward rooms.(110)

Many jurisdictions implemented policies restricting the number of locations staff could work which exacerbated pre-existing staffing shortages. Although credited as an important IPAC measure, it exposed the fact that many staff worked part-time jobs in multiple facilities to compensate for low pay. Furthermore, chronic staffing shortages become critical staffing shortages during outbreaks when many staff became ill.

Resident Factors

Residents of LTCHs are a highly vulnerable population. Congregate living increases their risk of COVID-19 infection, and their older age and underlying medical conditions are risk factors for severe outcomes.(111–113) Pre-existing medical conditions can also make IPAC control measures more challenging to implement. For example, adherence to mask wearing while outside their room and hand hygiene can be low amongst residents due to underlying cognitive or behavioral conditions. Many residents with dementia or cognitive impairment wander and do not adhere to physical distancing. Lastly, underlying illness, communication challenges or atypical presentations of illness that can occur in the elderly, may make it difficult to identify symptoms of COVID-19.

Outbreak Response

COVID-19 outbreaks can overwhelm a Home's ability to respond. As the outbreak spreads, residents require more care as they become ill, and at the same time, staff illnesses can decimate staffing. Lack of redundancy in staffing, particularly in management positions, can lead to challenges in leadership as well as operations when illnesses arise at a point when both leadership and staffing are critical. Once staff are off work, many LTCHs do not have robust Occupational Health Departments to help to safely bring staff back to work in a timely manner. Large outbreaks therefore require a system response, drawing on resources beyond the LTCH. Some LTCHs were successful with hospital partnerships, where hospitals provided much needed staffing during outbreaks, as well as IPAC, cleaning and Occupational Health support.(114) In the most severe outbreaks, LTCHs closed and residents were decanted to hospitals. In other scenarios, the Canadian military was required to help provide care for the residents.

Following wave 1, to help build LTCH capacity pre-emptively and to ensure IPAC on the ground support during outbreaks, some regions implemented hospital 'hub' and LTCH 'spoke' models. (115) In Ontario, this model has been applied as a way to provide much needed IPAC support to LTCHS during wave 2. The approach has improved IPAC capacity in the LTCHS to help with outbreak prevention and control. Although it is too soon to draw definitive conclusions around the effectiveness of this approach, in Ontario, as of early 2021, the SARS-CoV-2 infection rate per day in residents has been lower in the second wave than the first wave, and the case fatality rate from COVID-19 has improved from 33% mortality in wave one to 17% in wave two.(110) Despite these improvements, it is clear there is far more work to be done to improve IPAC safety in LTCHs.

Approach to Visitors in Long-term Care

At the beginning of the pandemic, many jurisdictions implemented strict no visitor policies, as a public health strategy to minimize the risk of outbreaks in LTCHs.(116) It quickly became clear that there should be a distinction between types of visitors. Some were general visitors, but others were essential care partners, providing critical physical care for the residents, as well as key mental health support. Accordingly, many regions have tried to maintain access for essential care partners, even as COVID-19 community transmission increases.

Clinical Presentation and Outcomes

COVID-19 in residents in LTCH's can manifest in many different ways. Most will develop classic COVID-19 symptoms including cough, fever and shortness of breath, however, COVID-19 can also manifest atypically, including confusion and falls.(117,118) The spectrum of illness varies widely. During outbreaks, approximately 15% of residents can remain asymptomatic whereas many others go on to develop severe illness.(117) Mortality in this population is high, ranging from approximately 15% to 30% in this population.(119) As our understanding of COVID-19 treatment increases, it is important to ensure this is translated, as appropriate, into the LTCH setting.

The impact of COVID-19 on residents, their families and staff of LTCHs is unparalleled in Canada. COVID-19 has exposed many gaps in the LTCH system, and opportunities for improvement are many. It is essential that we implement structural and system changes to LTCH's so that the COVID-19 experience is never replicated.

COVID-19 and the Education System in Canada

Since the beginning of the pandemic, there has been uncertainty and varied opinions about the risk of COVID-19 infection in children, and the potential role of children in transmitting infection in the community. More recently, governments and parents alike have grappled with planning around education and childcare during increasing epidemic spread. At the start of the pandemic in April 2020, school closures affected an estimated 1.3 billion students (UNESCO 2020).(120) The impact on the well-being of students, because of loss of educational, social, developmental, and school-associated non-academic supports is of significant concern.(121) In addition, school closures have negatively affected parents' work (particularly mothers) and family financial security. To address these important issues, epidemiologic and transmission studies, and school system-based surveillance are relevant. It is important to note that contradictory findings have been described in many of these areas, therefore this section focuses on what appears to be a consensus view of the stronger literature, and these conclusions may change as data evolve.

School closures, re-opening and home-schooling

The rationale for school closures can be twofold: to protect children from illness, and to reduce community transmission. Therefore, an accurate understanding of the risk of infection in children, the likelihood of children transmitting infection, the impact of school closures on epidemics, and understanding the counterbalancing of health risks associated with school closures are all important.

In the initial severe epidemics in China and Europe, it was clear that COVID-related hospitalizations in children were rare, and that children are less likely to have documented COVID-19 infection.

Only 1% of confirmed cases in the United Kingdom and 1.9% in Europe were in children.(122) Initial testing focused on the severely ill, so this finding could be due to high rates of mild illness in children going undocumented. However, large scale antibody testing across populations support that in many jurisdictions children have not been infected as much as adults. For example, a population-based study in Spain showed that children were less likely to have antibodies to SARS-CoV-2 (3.8% in <19 years old) with the highest rates of previous infection (6.0%) in those over 65 years and the lowest rates overall in those under 10 years (1.1% in <1 years, 2.2% in 1-4 years, and 3.0% in 5-9 years). (123,124) This increasing infection rate by age gradient has also been reported in other countries, including a study in Geneva, Switzerland showing seroprevalence children aged 5-9 had 1/3 the risk of those aged 20-49 years (relative risk [RR] 0.32 [95% CI 0.11–0.63]). (125)

Only one seroprevalence study showed higher rates in younger children which was also from Switzerland, across 12 cantonal districts.(126) This random sampling seroprevalence study of schoolchildren showed the overall seroprevalence to be 2.8 % (95% CI 1.6-4.1%).(126) In these data, higher rates were seen in younger ages (3.8% in grade 4-5 versus 1.5% in grade 7-8).(126) Three quarters of the children had COVID-19 compatible symptoms, but there were no symptom differences between COVID-19 seropositive and seronegative children.(126) Antibody detection was similar in randomly selected adults in the same region.(126) Therefore, patterns of exposure and mixing of children inside and outside of lockdown and school may be relevant, as well as the accuracy of the serologic tests used, especially when the overall incidence of disease is low. However, most studies suggest lower rates of COVID-19 infection in children. This may be due to less testing because of less severe infection, less exposure because of school closures, or to reduced susceptibility to infection.

Children do appear to be less likely to develop COVID-19 following exposure. A systematic review showed significantly lower attack rates in children than adults in household contact tracing studies, with 59% reduced risk as compared to adults in the same household.(127) This review included 32 studies, and children and adolescents younger than 20 years had 44% lower odds of secondary infection with SARS-CoV-2 compared with adults 20 years and older in both household and non-household settings.(127) This finding was most marked in those younger than 10-14 years. Proposed theories for reduced susceptibility to infection in children include cross-protective antibodies from other childhood coronavirus infections and increased angiotensin-converting enzyme 2 (ACE2) expression.(128,129) ACE2 acts as the cellular receptor for SARS-CoV-2, however, it also functions to counteract and modulate proinflammatory and fibrogenic pathways by binding and converting angiotensin-2 to angiotensin-1-7.(128) Thus, those with higher density of ACE2 expression may better preserve these normal functions as SARS-CoV-2 competes against angiotensin-2 for binding to ACE2.(128)

Thus, children themselves are generally at low risk of severe COVID-19 illness because they appear less likely to be infected and more likely to have very mild symptoms. However, as in the case of other respiratory viruses, do children spread infection within the community?

Most published observations from various countries suggest that children are more likely to be infected by adults than other children, and that children transmit relatively infrequently to adults, with no Canadian data available presently. However, a recent epidemiologic study in South India suggested more within age group transmission, and confirmed the observation that a small number of cases account for most transmission.(130) In this study, 5% of cases accounted for 80% of the

spread.(130) However, even in this study, most secondary cases acquired infection from index cases who were 20-44 years old and transmission from children was less prominent.(130) Infected children under 4 years old rarely transmitted outside their own age range, with a small signal of transmission in 65-70-year-olds in high-risk contact, and school aged children also tended to transmit to their own age range.(130) This has also been observed in the Netherlands, where of the total number of infected contacts, 0.3% (n=14) had a source patient under the age of 4 years, 0.7% (n=36) had a source patient aged 4-11 years, and 4.6% had a source patient aged 12-17 years.(131) In this report, the source patient was 18 years or older for 94.4% of infected contacts. (131) In summary, existing data would suggest that children with COVID-19 are not significantly driving infection in adults, although it must be noted that risk reduction behaviours over time may have included reduced contact of high-risk older adults with children.

Incidence and transmission within schools

As countries recovered from their first wave, concerns about the negative effect of school closures on children's educational and social development, health, food security, and the disproportionate harm to disadvantaged children grew. School closures immediately highlighted financial and resource disparities within and between school systems, with disadvantaged students less able to access or participate fully in virtual learning opportunities due to problems with computer and internet access, and the availability of an adult to supervise. Various guidance documents have outlined these concerns in detail.(132)

Key questions remain unresolved: what is the risk of transmission in schools to both students and teachers under various prevention conditions, and what is the impact of open schools on community transmission?

Modelling has been performed to assess whether it is feasible to prioritize school opening in the face of community transmission. A recent modeling study from the UK suggested that unless contacts could be traced, and symptomatic cases tested and isolated efficiently, school opening, and lockdown relaxation would likely contribute to a second pandemic wave.(133) In this model, adopting a part time rota delayed the second wave peak by 2 months, and the results held if children were 50% less infectious than adults.(133)

Over the last 10 months, there has been experience gained as some areas have continued in-person schools, closed schools entirely, or closed schools just for older children and teens. The observed experience after school opening in several countries is instructive, and overall suggests that schools certainly can reflect community transmission, with school outbreaks increasing as community COVID-19 infection rates increase, with no clear link between school reopening and increases in community transmission thus far.(134) However, there is less data directly addressing the question of whether schools amplify community transmission.

Early in the pandemic, a high-profile Israeli secondary school outbreak occurred shortly after widespread societal re-opening, with 13% of students and 16% of staff testing positive on screening.(135) This took place during extensive community transmission and a number of factors made it difficult to determine how much in-school transmission had occurred. However, this did raise concerns about school opening and "second waves". However, a preprint detailed Italian contact tracing study of 43 cases during the second surge, including 5 teachers and 30 children, was more reassuring and supports that younger children are less likely to transmit infection, with the transmission rate in preschool settings was 0%, primary schools 0.4%, and secondary schools

6.6%.⁽¹³⁶⁾ In these schools, measures included 1 m between desks, masking except when seated (although masking was not mandatory in primary schools), they had staggered entry and exit times, and if the classroom space didn't support 1 m distancing, they had alternating in-person classes.⁽¹³⁶⁾ A larger data set with an interim analysis of >20,000 schools with >1 million children in England revealed 67 single cases, and 30 outbreaks.⁽¹³⁷⁾ Of these, 22 outbreaks were due to adult staff index cases.⁽¹³⁷⁾ Importantly, outbreaks correlated with community prevalence. Measures in place included small classes in "bubbles" and hand hygiene.⁽¹³⁷⁾

The risk of transmission to teachers has also been a focus of controversy. Occupation level data from Sweden suggested that teachers did not have an elevated risk of COVID-19 infection compared with the general population.⁽¹³⁸⁾ A further Swedish analysis (in preprint) compared infection rates in lower grade secondary teachers (who conducted in-person classes) to upper grade secondary teachers (who conducted on line classes) and suggested an increased risk of infection of the in-person versus at home teacher population [OR 2.01; 95CI 1.52–2.67].⁽¹³⁹⁾ The infection rate in the in-person teaching group was 0.46%, compared to 0.55% in non-healthcare worker parents in the same study.⁽¹³⁹⁾ It was noted that teachers at open schools were exposed to other adults at work and during their commute, and that during this period there were no class size restrictions or face masks in use.⁽¹³⁹⁾ These factors make this study difficult to interpret with respect to teacher's role-specific risk, as it essentially compares adults working from home to adults exposed to others in the community and in indoor spaces without personal protective equipment. By comparison, a seroprevalence study in two areas of Stockholm showed much higher incidence of infection overall and suggested geographic and socioeconomic risks play a large role, with 4.1% positivity in an area where working from home was common versus 30% positivity in area with many service workers, as of June 2020.⁽¹⁴⁰⁾ There are no specific data reported on teacher risk in a Canadian context.

In Canada, provinces and territories returned to in-person or hybrid in-person and virtual instruction for the Fall 2020 school year. Public attention to the prevention measures (and their variability) was intense, with hand and environmental hygiene measures universally supported, and variable use of symptom screening, masking in different age ranges, and more controversy over class size caps, and various methods of cohorting students. Table 1 summarizes measures used across provinces and territories, with wide variation reflecting both controversy over the efficacy of proposed prevention measures, a lack of standardized guidelines across jurisdictions, and differences in local transmission risk.

Table 1. COVID-19 Prevention Measures in place across Canada

Region	Class size, cohorting measures	Mask recommendations	Other measures, provincial funding allocation	In school, at home/virtual options
British Columbia	No change Learning groups of 60 (elementary) and 120 (high school)	Mandatory (middle and high school) Optional (in classroom for staff/students, common areas/buses)	Staggered breaks, barriers, individual activities \$45.6M funding	Virtual learning to supplement in school
Alberta	No change Cohorts	Mandatory (Grade 4-12, common areas/buses) Optional (K-3)	Staggered start times. No large gatherings \$10M funding	At home option for high school Nov 30, 2020 Grades 7-12 at home learning until Jan 8, 2020
Saskatchewan	Class is cohort	Level 1 no mask required Level 2 masks required (Grade 4-12 in common areas, Grades 9-12 mask in class if cannot distance)	Staggered entry/exit and breaks \$40M funding	
Manitoba	Level 1: Distancing – if not possible, cohorts Level 2: Blended learning Level 3: Remote learning Cohort maximum is 75	Mandatory (Grades 4-12 if cannot distance, on buses)	For in person instruction: Staggered break times No assemblies \$100M funding	At home learning option for high school. Level 3 Remote learning
Ontario	No change Some school boards (designated) capped at 15 -20 students Cohorting by school board	Mandatory (Grades 4-12, some school boards K-12 mandatory)	Staggered break times \$35M funding	K-8 all in person instruction Secondary schools in designated areas alternating virtual instruction
Quebec	6 student “bubble” within class Classroom acts as cohort	Mandatory (Grades 5-12, Postsecondary in common areas, in contact with other groups, and in “Red zones”)	1m distance for 16 and under, 2m for 17 and older 2m between students and staff	Option for alternate day in school and home learning.

Newfoundland and Labrador	Distancing per school boards, reinforce if increase in community transmission Cohort by class if possible	Masking allowed		In person classes through hybrid to at home depending on Public Health
New Brunswick	Cohort size K-2: 15 if possible 3-5: reduced if possible 6-8 regular class	Mandatory (Grade 6-12 outside class) Encouraged (K-5) Teachers 9-12 mask or face shield if cannot distance	1m distancing within classroom grades 9-12	High school alternate day in school and home learning.
Nova Scotia	K-12 Cohort, outdoors if possible	Mandatory (Grades 4-12 unless 2m apart, on buses, in large groups)	Staggered entry/exit and breaks, no large assemblies Outdoors encouraged \$40M	Option for home learning or hybrid if COVID-19 risk increases.
Prince Edward Island	Cohorting Smaller class size if possible, distancing	Suggested (K-6) Recommended (Grade 7-12 if cannot maintain distancing)	Staggered break times \$2M funding	Possible at home learning as contingency plans
Yukon	Cohorting, smaller class size per school operational plan	Recommended (over age 10 & cannot distance 2m)	Staggered breaks entry and exit	In Whitehorse, ½ day virtual Grades 10-12
Northwest Territories	Distancing Grades 7-12	Face shields and mask on bus and as needed by staff and students	Staggered breaks entry and exit Daily screening Gathering size limits \$4.85M funding	Grades 7-12 blended if necessary Remote age 19+
Nunavut	Distancing, limited group activities (Stage 1-3 increasing restrictions)	Not required		Stage 4 remote learning

Experience after school re-opening

It is notable that in spite of school opening and enhanced testing in younger populations, that as of the end of November the recognized COVID-19 infection rate is lowest in ≤19-year-olds at 68/100,000 and is still highest in the ≥80 age group at 135/100,000. Those age groups account for 0.0% and 70.9% of the deaths in Canada respectively.(4)

Nonetheless, school outbreaks (defined by >2 cases in the federal public health reporting) were the largest outbreak category in September 2020 with over 300 outbreaks identified, but school outbreaks were surpassed by long term care and retirement residence outbreaks in October and November.(141) In spite of this, school opening over the fall was seen largely as a success, as case numbers arising from school settings remained modest, and the perception that increased testing around school opening resulted in capture of more clinically minimal or post infectious cases in children and youth. Of schools with ongoing case counts, 234/342 reported 2 to 4 cases, and 29% (100/342) reported 5 or more cases.(141)

Table 2 is derived from a public data compilation of school-based outbreaks, as provincial public health data is not comprehensively available, and where available is not provided in a comparative format. Thus, these data should be interpreted with caution, although available public health reports were checked to ensure no large discrepancies in outbreak numbers exist. This data repository uses a definition of 2 linked cases as an outbreak thus mirrors the federal reporting, although individual provinces definitions vary. Based on these data and federal data, although school outbreaks have been occurring since September 2020, the number of possible outbreak associated cases remain quite low, affecting from 0% to 0.5% of students in Canada (highest in Manitoba) in spite of large scale in person learning in the Fall 2020 school year with all provinces and territories offering in class learning.(142)

Overall, although school-based cases of COVID-19 undoubtedly have created considerable difficulties in quarantine and investigation, a small number of children overall have been infected, although larger numbers have been affected, and there has been considerable stress placed on the education system.

Table 2. Number of school-based outbreaks (2+ cases) and associated case count as of December 4, 2020 (open source)

Region	Cumulative Number School Based Outbreaks*	Cases / Outbreak	Outbreak associated cases/1000 students**
British Columbia	535	2.29	2.2 (1230 of 553377)
Alberta	614	2.39	2.3 (1468 of 640869)
Saskatchewan	195	1.88	2.1 (367 of 177246)
Manitoba	331	2.68	4.9 (889 of 181023)
Ontario	1849	2.72	2.5 (5047 of 1993431)
Quebec	1905	N/A	N/A
Newfoundland and Labrador	0	N/A	N/A
New Brunswick	21	1.05	0.2 (22 of 97911)
Nova Scotia	6	1.16	0.1 (7 of 118152)
Prince Edward Island	0	N/A	N/A
Yukon	0	N/A	N/A
Northwest Territories	0	N/A	N/A
Nunavut	0	N/A	N/A

**These data are not available in a comparable format nationwide from any public health source, and are derived from a crowdsourced website, <https://masks4canada.org/canada-covid-19-school-case-tracker/>, which is an aggregation of publicly available data and information “that has been disclosed on a voluntary basis in the public interest.” Single/Unlinked cases are not included. Investigation of some outbreaks may be ongoing.*

***Student population data by province from <https://www150.statcan.gc.ca/n1/daily-quotidien/171103/t001c-eng.htm>*

Severe COVID-19 disease in Canada

The spectrum of COVID-19 ranges from asymptomatic infection to mild-moderate, severe and critical disease.(143) Patients who develop mild-moderate COVID-19 usually recover at home with supportive care and do not require hospitalization. Those with severe disease present with shortness of breath, need for supplemental oxygen, or have >50% lung involvement on radiologic imaging.(143) They require hospital admission, and are generally treated on medical wards. Some hospitalized patients develop critical disease – with respiratory failure, shock and/or multiple organ failure – and require admission to ICU, often due to the need for invasive life support therapies.

PHAC estimated that, of a total 294,658 Canadians with COVID-19 for whom detailed case report data were available, 22,954 (7.8%) have been hospitalized to date.(144) Among hospitalized patients, approximately one fifth [4,416 (19.2%)] have been admitted to ICUs, and 1,058 (4.6% of hospitalized patients and 24.0% of ICU patients) required mechanical ventilation.(4) Additional forms of organ support, such as renal replacement therapy and extracorporeal membrane oxygenation, are rarely required, however Canadian data are unavailable. (145,146)

Canadian hospitalization and ICU admission rates are similar or comparatively lower to other countries. From over 55,000 lab-confirmed COVID-19 cases in China approximately 80% of patients had mild-moderate disease, 14% required hospitalization for severe disease and 6% developed critical disease.(1) During the first wave in Italy, high ICU admission rates were observed – with the proportion of ICU admissions representing approximately 12% of all positive cases but only 16% of hospitalized patients. This may relate to varying ICU admission criteria, or more likely, population differences in risk factors for severe disease (such as age and pre-existing medical conditions).(147)

High rates of hospitalization were also observed in New York City during the first wave, with 52% of COVID-positive patients requiring hospital admission, 24% of whom required mechanical ventilation. This may have been due to the high number of pre-existing medical conditions in their population; with 88% of admitted patients having two or more underlying conditions.(146)

Differences in hospital and ICU admission percentages by country vary. Reasons for this are complex and relate to population risk factors as described below, health care capacity and differences in case detection and reporting (which may affect accuracy of the denominator).

Risk factors for Severe COVID-19

A number of risk factors have been identified for the development of severe or critical disease.

Age has been consistently associated with severe disease.(145,148,149) In particular those >60 years of age seem to be at highest risk. In Canada, hospitalization rates of those with COVID-19 range from a low of 1.4% in those 0-19 years old, up to 33.7% in those greater than 80 years

old. ICU admission rates similarly increase with advanced age, with 1.1% in those 0-19 years of age, 3.0-8.7% in those 20-49 years, and 18.1-25.7% in those greater than 50 years old.(144) The highest ICU admission rates (~25%) have been observed in those 60-79 years of age. ICU admissions drop slightly in those greater than 80 years (13.9%), likely due to patient preferences (patients declining ICU care near the end of life) or limited access. Disease in young children appears to be rare.(150) Sex differences in hospitalizations and ICU admissions are not striking, however, it does appear that males are more likely to develop severe disease. Males account for 56% of hospital admissions and 66% of ICU admissions in Canada.

Chronic medical conditions have been consistently associated with severe disease. (143,148,151,152) In Canada, among hospitalized cases with available data, 74% reported one or more pre-existing conditions. Such conditions include chronic lung disease, heart disease, hypertension, diabetes, kidney disease, liver disease, and stroke. In addition, those with immune compromise (e.g. receiving chemotherapy for cancer) and obesity (body mass index 40 or greater) are at higher risk.(153)

The majority of pregnant women with COVID-19 will experience mild to moderate illness, but studies have shown that pregnant women with more severe COVID-19 disease, have had increased risk of ICU admission and mechanical ventilation as compared to non-pregnant women.(154–157)

Risk factor data from other countries are very similar.(158) Individuals at highest risk for severe disease in China included those over 60 years and those with underlying medical conditions such as hypertension, diabetes, cardiovascular disease, chronic respiratory disease and cancer.(1,159) In a large study of Italian patients admitted to the ICU with COVID-19, 68% had at least one pre-existing medical condition.(160)

In New York, the strongest risk factor for hospital admission was age, with an odds ratio (OR) of greater than 2 for patients 45 years and older and 38 for those 75 years and older.(149) Other risk factors included heart failure (OR 4.4), male sex (OR 2.8), chronic kidney disease (2.6), and obesity (OR 2.5 for BMI>40). Those admitted to hospital were more likely to be men (61 vs 37%). Similar risk factors predicted the need for ICU admission.(149)

Presentation

The median incubation period from exposure to SARS-CoV2 to the development of COVID-19 (disease) is estimated at 4-5 days, but can be up to 14 days.(161) As mentioned previously, the spectrum of disease ranges from asymptomatic infection to severe viral pneumonia. In those who require hospitalization, shortness of breath and low oxygen levels often occur around 5-8 days from the onset of milder symptoms, such as fever and cough. Hospital admission usually occurs approximately 7 days from symptom onset.(145,162) Progression to critical disease often happens quickly in this group of patients, with decreasing oxygen levels and the development of acute respiratory distress syndrome (ARDS) - a syndrome characterized by low oxygen levels and widespread inflammation in the lungs.(145,148,163–165)

Additional complications can include acute cardiac injury (7%), shock (9%), kidney or liver failure, thrombotic complications (blood clots in the legs or lungs) and neurologic complications such as stroke.(145) Some patients with severe disease appear to have a pronounced inflammatory response, characterized by persistent fevers and elevated laboratory markers of inflammation. Secondary infections (such as secondary bacterial or fungal pneumonias) do not appear to be

common, with 8% reported in one study.(166) However, higher incidence (up to 28%) has also been reported, in particular among critically ill patients with COVID-19.(167)

Chest X-ray findings in severe or critical disease generally show widespread abnormalities. Patients admitted to the ICU usually require either high-flow oxygen or mechanical ventilation. For patients who develop respiratory failure, mortality is between 15-31%.(168,169)

Mortality

The overall Canadian case fatality rate as of November 25, 2020, was 3.4%.(16,170) Mortality ranges from 0-10% by province and territory – reflecting differences in disease activity and local outbreaks. Overall, case fatality rates are similar in other countries. For example, as of late-November 2020, mortality rates in China, Italy and USA were 5.1%, 3.5%, and 2.1%, respectively. (16) Reported case fatality rates have declined globally, which may relate to a number of factors – more widespread testing (including asymptomatic individuals), an increase in cases among younger patients, and better therapies (such as anti-inflammatories as reported in the RECOVERY Trial).(171) In those requiring hospitalization, mortality has been approximately 14%. For those patients requiring ICU admission, case fatality is higher, at 25%.(172) It does appear that case fatality rates are also declining in this population over time.(173,174)

Mortality, not surprisingly, has been associated with advanced age given this is one of the strongest risk factors for severe or critical disease.(148,158,164) Mortality remains relatively low in young populations, with 0-0.2% mortality in those 0-39 years old and 0.6% in those 40-49 years of age. The highest mortality has been observed in 70-79 year-olds (18.4%) and those greater than 80 years old (71%). Canadian provincial and territorial mortality reporting is available at <https://health-infobase.canada.ca/covid-19/epidemiological-summary-covid-19-cases.html>.

In Canada, 53% of deaths have been in females, however, other countries have observed higher mortality in males compared to females. The higher female mortality rate in Canada may relate specifically to a larger number of female deaths in those over 80 years, which may be explained by longer life expectancy (and a larger proportion of elderly females at risk of developing COVID-19) in Canadian women compared to men. In the United States 54% of deaths have been in males, despite fewer overall case counts in male patients (48% of all infections).(175) Higher male mortality has also been observed in Italy with a 3:1 male-to-female ratio.(176)

In China, the overall case fatality rate reported in February 2020 was 3.8%. At that time, mortality varied by region and intensity of transmission, with the highest rates in Wuhan (5.8%) and much lower rates (0.7%) in other regions in China. In addition, mortality was higher early in the outbreak and has decreased over time, perhaps due to changes in standard of care and increased healthcare capacity. Mortality was also associated with advanced age in China, with the highest case fatality rates among those over 80 years. Males were more likely to die compared to females (4.7 vs 2.8%) and those with no pre-existing conditions had lower case fatality rates (1.4%) compared to those with pre-existing medical conditions (7.6-13.2%).(1,164)

In Italy, the overall case fatality rate was reported as 7.2% during the first wave, which was substantially higher than in other countries. This higher mortality appeared to be due a larger proportion of older COVID-19 patients, and higher mortality specifically in those aged over 70 years. This is likely explained by the older mean age in this eldest cohort, with a higher proportion of over 90 year-olds.(177) In addition, the higher mortality in Italy may have been overestimated

given that COVID-19 related deaths were defined by test positivity, independent of pre-existing diseases that may have caused death.(177)

Similar overall mortality trends are being observed in the United States, with disproportionately higher mortality in older populations (15% in 50-64, 21% in 65-74, 27% in 75-84 and 32% in those 85 years or older). Members of minority racial and ethnic groups are also disproportionately at risk of death from COVID-19.(178)

ICU capacity

The creation of hospital and ICU capacity to care for large numbers of COVID-19 patients has been, and continues to be, a major challenge during the pandemic. An assessment done after the 2009 H1N1 pandemic showed that provinces vary significantly in baseline ICU capacity, with ventilator capacity ICU beds ranging from 5.5 to 19.3 per 100,000 population, and similarly, acute care beds availability across Canada relatively low compared to peer countries at 200 per 100,000, with a range across provinces.

Some countries had the opportunity to engage in advance capacity planning (Canada, USA) while others hit earlier during the global pandemic (China, Italy), unfortunately did not. Considering approximately 20% of hospitalized patients require ICU admission, of which up to 70% can require mechanical ventilation, additional staffing, supplies and space are required to care for these patients.(179,180)

Staffing needs have been met in many countries by reclaiming and redeploying healthcare staff. For example, in the early days of the pandemic, China deployed 40,000 health care workers to Wuhan. In addition to human resource shortages, supply chains (e.g. personal protective equipment) have been threatened, but have been met in Canada, at least for now by an increase in manufacturing. Ventilator inventory and stockpiling has been essential as part of ICU capacity planning.

Additional physical space has been required for assessment centres and to expand medical wards and ICUs. Much of this space has been refurbished or borrowed space from other clinical services. To increase resources, many countries (including Canada), have suspended or delayed elective (including non-urgent but necessary) medical and surgical procedures. For example, 60% of elective surgeries were on hold in Alberta at the time of writing. ICU restructuring, with non-critical care trained staff delivering ICU care through team nursing has been required in many settings.

The development of triage criteria and documents to guide practitioners in deciding who should receive care when health care resources are insufficient have varied by country. Some have been published widely while others have received little to no publicity.(181,182) Clear societal guidance on triage is important, as otherwise undue stress and responsibility is placed on physicians to make these decisions – which can have legal consequences.

Mathematical modelling has been employed widely to help plan capacity needs. Unfortunately, predictive models – even with best case, worst case and most likely scenarios – are not always accurate.(179) This is likely due to insufficient early data, temporally and geographically dynamic outbreak settings, and the complexity of the models, where variables may be difficult to predict. (183) Such variables include infectivity, hospitalization, and ICU admission rates; ventilation and advanced life support needs; hospital and ICU lengths of stay; and the effect of physical distancing, mandatory masking or lockdown measures. Despite this, real-time modeling remains an important

element in attempting to predict the health care needs of Canadians and planning for resource allocation (<https://www.canada.ca/en/public-health/services/diseases/coronavirus-disease-covid-19/epidemiological-economic-research-data/mathematical-modelling.html>).(184,185)

Multisystem Inflammatory Syndrome in Children (MIS-C)

As mentioned previously, children of all ages can develop COVID-19, however, they appear to be less affected than adults, accounting for approximately 10-15% of total cases.(144) In addition, children appear to have milder symptoms than adults, and more than one third of children with COVID-19 show no symptoms.(186) Severe disease, although rare, has been reported in approximately 2% of childhood cases with even fewer develop critical disease (0.7%).(187) Additionally, it was recognized in May 2020 that some children with COVID-19 were developing symptoms resembling the rare inflammatory syndrome Kawasaki disease, with significant multiorgan dysfunction and shock.(188) This surge was recognized in pediatric centres, following four weeks after the initial peak of the COVID-19 pandemic in the surrounding community. Now called “multisystem inflammatory syndrome in children associated with COVID-19” (MIS-C), this illness tends to affect 8-10 year-old children.(188)

This syndrome is extremely rare, affecting approximately 0.02% of children with documented COVID-19, using UK data.(122) Similarly, a rapid review of pediatric transmission yielded an estimate of 0.05% on informal analysis of reported cases in New York State.(189) Peaks of cases have occurred 2-4 weeks after the peak in incidence of COVID-19 and almost all children from various reported cohorts are positive for SARS-CoV-2 IgG antibody when diagnosed. Children from Latino, Black, Asian or other minority ethnic backgrounds are over-represented in the cases described so far.(122) Given that most children have had positive antibody tests at the time of illness (suggesting immunity and previous infection), this disease seems to be a post-viral inflammatory state. Children may have persistent fever, abdominal pain, diarrhea and vomiting, and occasionally rash and mouth findings.(122) Shock, heart dysfunction, and respiratory distress may occur.(122) Therapies being studied include intravenous immune globulin (IVIG) and steroids, as well as other immune modulators. Although this disease can be severe and require critical care support, most children recover quickly, with an overall mortality around 2%. (190) This syndrome has caused a great deal of concern, however, remains rare, with an overall good prognosis, and increasing knowledge about most appropriate therapies.

Post-acute COVID or prolonged post COVID-19 symptoms

Some patients reportedly experience symptoms lasting weeks or months after acute COVID-19. (191–194) A number of terms have been used to describe this entity in the literature – “post-acute COVID”, “post-COVID syndrome”, “long haulers”, “long COVID” or “chronic COVID”. These patients appear to have recovered from the most serious symptoms of infection and do not have evidence of active viral infection, however, have ongoing symptoms. The underlying mechanisms are not well understood, however, it is believed to be a post-viral phenomenon. Whether this syndrome is unique to COVID-19, or represents a non-specific syndrome related to illness recovery remains unclear. Symptoms such as fatigue, shortness of breath, chest pain/tightness and cough are often present.(193,195) In addition, physical impairment (deconditioning, muscle weakness), psychiatric disorders (anxiety, depression, post-traumatic stress disorder) and cognitive impairment (deficits in attention/concentration, memory and executive function) may be present.(196,197)

Validated or agreed-upon definitions for 'long COVID' do not exist. Some describe post-acute COVID by symptoms extending beyond 3 weeks from the onset of first symptoms and chronic COVID when symptoms extend beyond 12 weeks.(191) It is estimated that approximately 10% of COVID-19 patients develop this syndrome.(192) Risk factors are not described – thus far it appears patients of any age, any pre-existing medical state or any severity of acute illness can develop 'long COVID'. Most patients did not require hospitalization in the acute phase of illness, and even fewer have required ICU-level support.

Symptoms are varied and inconsistent but include cough, shortness of breath, fatigue, body and joint pain, headache, insomnia and cognitive changes (predominantly impaired memory and concentration). Relapsing or waxing/waning symptoms are also common. Further research to explore differences in objective lung function, as well as associations between infection and less quantifiable symptoms (such as fatigue), is needed. An understanding of the distribution and magnitude of these associations will help us better understand the disease, guide patient care and ensure adequate resources are available.

Post-COVID recovery clinics have been developed in a number of centers in Canada, to address the need for more chronic care and follow-up. These are specialized care clinics for those who were diagnosed with COVID-19 and are now in recovery, where they can receive comprehensive care including access to a multidisciplinary team of physicians and allied health services.

COVID-19 in Vulnerable Populations in Canada

The pandemic has had a historic impact on the global community. In this section we review populations in Canada that may not access the healthcare system in traditional ways or are at increased risk of acquiring or dying from COVID-19. These populations may also be disproportionately affected by the public health and societal responses to the pandemic.(199) There is not one COVID-19 epidemic in Canada, but many micro/regional-epidemics. Data on these heterogeneous groups can inform a risk-tailored approach to individual communities and unique cohorts. This practice is not uncommon when approaching communicable diseases. The end goal of specific targeting would be to prevent infections, hospital admissions and deaths, and promote health equity.

Indigenous Peoples

Data pertaining to cases of COVID-19 on First Nations reserves is publicly available through Indigenous Services Canada (ISC).(200) According to ISC, as of December 3 there have been 4303 confirmed COVID-19 cases. Of these, 1564 were active cases at that time. A total of 192 cases required hospitalization and a total of 39 deaths were reported. The vast majority of these cases have been observed in the prairie provinces, with 1323 cases in Alberta, 1102 cases in Manitoba and 1185 cases in Saskatchewan.

In contrast to predictions made early in the pandemic, Canadian First Nations, Inuit and Métis communities have actually had lower COVID-19 incidence rates and mortality compared with non-Indigenous peoples.(201) This is despite social determinant of health and structural inequities associated with poor outcomes that existed prior to the pandemic. As of November 9, the percentage of reported COVID-19 cases among Indigenous Peoples living on reserve was half the rate of the general Canadian population and the case fatality rate was 20% that of the

general Canadian population.(200) However, there are well-founded concerns that cases may be amplified in the second wave (winter months) in communities that traditionally have had higher rates of community virus transmission.

Certainly, there is heterogeneity among Indigenous communities, and this also pertains to health care and access to COVID-19 screening. Furthermore, the data above, pertains to on-reserve individuals and does not account for those living off-reserve. Many Indigenous people living off-reserve may find themselves marginalized and facing barriers to access medical care and diagnostics. Some communities are remote and face challenges due to their geography. Although the remoteness of some Indigenous communities may decrease the risk of entry of the virus into the community, once within the community there is high risk of spread. Mitigation strategies such as social distancing and hygiene practices, the mainstay of Canada’s approach to containing the pandemic, require adequate housing and water, which may be a challenge in Indigenous communities.(202,203)

In early-May, an outbreak was reported in northern Saskatchewan where two Dene elders living in a long-term care facility died. The community was locked down to all but essential travel. Two nearby Indigenous communities also reported cases at that time.(40) An additional outbreak was noted in northern Saskatchewan in July. Through the early stages of the second wave, cases in Indigenous communities were on the rise with associated deaths. This was noted in communities in the Yukon, Manitoba, Ontario and Quebec.(204)

Tracking outbreaks in Indigenous communities across Canada has been challenging, however, the ISC has used 10 or more cases in a community as a proxy for community outbreaks to assist with operational planning. As of November 16, there were greater than 50 Indigenous communities fitting that definition (Personal communication D. Webster, Dr M. Trubnikov [Communicable Disease Control Division, First Nations and Inuit Health Branch, Indigenous Services Canada]; November 18, 2020). It is important that these communities determine the approaches that work best within their own settings. The First Nations Health Managers Association has developed the *Pandemic Planning Tool for First Nations Communities* to assist in the development of individualized pandemic plans.(205) During the pandemic, many communities have shown self-determination, articulating and implementing rules pertaining to entrance into communities. Frequently, the measures employed have been stricter than those of other local municipalities, provinces and territories.(202)

To date there is a paucity of publicly available or published data on COVID-19 and Indigenous Peoples. Research may help to determine future strategies. Where research is undertaken, however, it is critical that the principles of ownership, control, access, and possession—commonly referred to as OCAP®— be applied.(206) Indigenous Peoples own their cultural knowledge and community data collectively in the same way that an individual owns his or her personal information. Indigenous leaders have appropriately advocated for the collection of Indigenous-specific COVID-19 data with clear data sovereignty agreements related to access, control, ownership and possession of the data.(202)

Racial Disparity – Ethnic Minorities & Newcomers to Canada

Racial disparities and health inequities are known to exist in Canada.(207) Beyond the inequities experienced by Indigenous Peoples, there are other notable racial disparities in Canada. Existing data suggests that visible minorities and newcomers to Canada may experience higher rates of

discrimination, associated with risk factors for chronic disease as well as higher rates of COVID-19. (208)

Similar disparities exist outside of Canada. A published review of preliminary data from Connecticut demonstrated higher rates of COVID-19 infection and death among Black Americans.(209) Similar findings were observed among those living in England and Wales of Black ethnicity (Black Caribbean; Black African; Black Other) where COVID-19 mortality was found to be nearly double that of those of White ethnicity (White British; Irish Traveller; Other White) in the same communities, even when adjusted for age and other socio-demographic characteristics. Females of Bangladeshi and Pakistani ethnicity had a mortality rate 1.6 times greater than their white counterparts. For males in these ethnic groups, the risk of death due to COVID-19 was 1.8 times greater.(210)

The reporting of comprehensive COVID-19 data by race and ethnicity in Canada has been limited to date. Within weeks of recognition of the first cases in Canada, emergent case data indicated that the highest infection and mortality rates were concentrated among minority populations. (211) An outbreak at a shelter for refugees in the North York district of Toronto was publicized following the release Toronto Public Health data, which showed 88 residents tested positive for SARS-CoV-2.(212)

A CBC report from mid-June suggested significant disparity and health inequity related to COVID-19 among Black residents in Montreal.(213) Although Canadian data on the race of COVID-19 patients is not publicly available, such data may aid in identifying and protecting vulnerable populations. To assess how race and socio-economic factors have impacted communities during the pandemic, the broadcasting corporation cross-referenced census data with case numbers for each borough or municipality. They found that lower-income neighbourhoods with higher numbers of Black residents had registered the most cases of COVID-19 in the city. For example, Montréal-Nord, home to a large Haitian community, had the highest case counts, with 2911 cases per 100,000 people as of June 9.

Using Ontario health insurance plan (OHIP) data, researchers in Ontario reviewed patterns of COVID-19 testing and results for immigrants and refugees.(214) It was found that while immigrants, refugees and other newcomers make up roughly one quarter of Ontario's population, they accounted for 43.5% of all COVID-19 cases by June 2020. Among those tested, refugees had the highest percent positivity at 10.4%, compared to 7.6% positivity among other immigrants and 2.9% among Canadian-born and long-term residents. In addition, Ontario Laboratories Information System (OLIS) data up to October 12 revealed that those living in the most ethnically diverse neighbourhoods of Ontario had an almost 10-fold higher percent positivity for COVID-19 (3.7%) compared to those living in the least diverse neighbourhoods (0.4%).(215)

To effectively protect and support vulnerable communities and marginalized people, data pertaining to COVID-19 cases and outcomes within these communities is vital. PHAC reports that it is working with federal partners, provinces and territories towards the development of a pan-Canadian Health Data Strategy (pCHDS). Race and ethnicity data pertaining to COVID-19 are among the list of short-term priorities.

People Who Use Drugs

Prior to the pandemic, people who use drugs (PWUD) were caught in the concurrent public health crises due to human immunodeficiency virus (HIV), hepatitis C virus (HCV) and the opioid epidemic.

It is well established that when viral infections such as HIV and HCV co-exist with poverty and homelessness, the result is accelerated disease progression and worse outcomes.(216) It has been acknowledged that interventions aimed at reducing harm from substance use in combination with increasing the delivery of health care are critical to reducing adverse health outcomes. The arrival of the COVID-19 pandemic has compounded this syndemic.(217) Many public health mitigation strategies employed to combat the pandemic have made the management and prevention of substance use disorders more challenging.(218)

Opiate agonist therapy (OAT), needle exchange programmes, withdrawal management, and counselling services have been disrupted during the pandemic resulting in unmitigated substance use and high-risk behaviours, as well as increased risk of individual COVID-19 infection and transmission within the community.(219,220)

British Columbia is the epicentre of Canada's opioid epidemic.(221) Beginning in April, as the pandemic evolved, a large spike in overdose deaths was reported. In fact, the illicit drug overdose death toll in June was the highest monthly count in the province's history – greater than the number of deaths resulting directly from COVID-19. The number of illicit drug toxicity deaths in September 2020 equated to roughly 4.2 deaths per day and 70% of those dying were aged 30 to 59 years.(222) To adhere to social/physical distancing, many PWUD have been more inclined to use alone, increasing the risk of unintentional overdose. Cuts to supervised consumption site budgets and increased deaths among PWUD have been felt across the country.(223,224)

While increased harms in relation to substance use have resulted indirectly from the COVID-19 pandemic, PWUD are also at increased risk of acquiring COVID-19 and developing severe disease.(225,226) Many PWUD live in poverty and have other medical conditions such as immune deficiency and chronic lung disease.(226) Sub-optimal and crowded housing may increase the risk of viral transmission. Unstable housing, food insecurity and precarious social supports may also compromise recovery. PWUD may also prioritise drug use above other health concerns and self-manage symptoms by increasing opioid use.(220)

To date, COVID-19 has had a devastating impact on PWUD with pre-existing challenges further compounded by sudden and dramatic changes in social and healthcare systems.(227) In general, PWUD have been more vulnerable during the COVID-19 pandemic, due to poor health literacy, stigma and discrimination. Access to testing in PWUD has been challenging.(217,220)

Maintaining adequate management of substance use disorders during the pandemic will require advocacy and innovation. As individuals may require periods of isolation during the pandemic, they may need a sustained supply of OAT. Ensuring access to take-home naloxone is also crucial to reduce overdose.(220)

People Who Are Homeless

In 2016, 129,000 Canadians made use of emergency shelter beds with an estimated average of 14,000 Canadians using an emergency homeless shelter each night.(228) Approximately 400 emergency shelters across the country offered 15,400 beds per night during that year. Four years later, the pandemic is drawing attention to the serious implications of policies and approaches that have allowed shelters to become permanent homes for many of the country's most marginalized people.

Despite being a safer place for many, most shelters are only open from the evening through to the morning hours and individuals must seek out other safe places during the day. The pandemic, however, has uprooted established routines. (229) The loss of this limited structure has thrown further chaos into already frail lives. Increased food insecurity and difficulty accessing required services to meet basic needs have been observed.(230)

The homeless may also be at increased risk of viral acquisition and severe COVID-19. Viral transmission within shelters may occur given the congregate setting.(228) An American study assessed the prevalence of COVID-19 in homeless shelters in four cities in March/April 2020. Atlanta had a prevalence of just 4% among residents, however Seattle, Boston and San Francisco had much higher rates of 17%, 36% and 66%, respectively. The prevalence among shelter staff ranged from 2% in Atlanta to 30% in Boston.(231)

Systematic testing in Toronto recorded outbreaks at 14 Toronto shelters by April 2020, with 110 confirmed cases at one site.(212) Toronto's shelters have struggled with capacity issues with roughly 7000 people using shelters in the city every night.(232) During the first wave of the pandemic, many Canadian cities sought to move residents from shelters to other centres set up to alleviate overcrowding. Victoria's city council passed an emergency resolution on April 17, calling on the use of empty hotels to house the homeless in order to assist with physical distancing and self-isolation.(233) Similarly in Toronto by late-April, more than 1000 shelter residents had been moved to hotels, permanent housing or other shelter space.

Homelessness in Canada presents key challenges for pandemic planning due to complex health, situational and structural vulnerabilities.(234) Medical issues combined with marginalization lead to significant vulnerability to infection. Transmission risk is greater given the inability of people experiencing homelessness to self-isolate.(228) In addition, shelters are characterized by overcrowded sleeping conditions, poor air quality, and a range of public health issues that predispose to higher risk of transmission.(228) Addiction and mental illness may complicate adherence to mitigating strategies.(234) Furthermore, shelter staff must face many of the same exposure risks as health care workers yet have not had the same access to personal protection equipment, nor the relevant infection control training.(228)

Individuals with a longer history of homelessness have higher rates of pre-existing medical conditions and are at risk of more severe COVID-19 illness.(235) Making matters worse, homelessness is associated with less access to health care, and a delay in seeking care when ill.(236,237) As shelters are often closed during the daytime, the unwell homeless have limited options for adequate rest and recovery.(234)

People Who Are Incarcerated

Correctional facilities have a long history of high rates of infectious diseases, including communicable respiratory illnesses. Previous respiratory virus pandemics have been associated with outbreaks in prisons, including the 1918 influenza pandemic.(238) There are many factors that contribute to infectious diseases transmission among the incarcerated. Prisoners have a high prevalence of infections at baseline. Overcrowded communal spaces, frequent delays in medical care and sub-optimal communicable disease contact tracing, prevention and treatment further increase the risk of outbreaks.(239) Infection control practices may be insufficient and further complicated by the high incidence of mental illness in correctional facilities, where adherence to transmission-based precautions is more challenging.(240)

As such, correctional facilities have seen COVID-19 outbreaks. In late-February, 41% of incident cases of COVID-19 reported in Wuhan, China, were from the correctional system.(241) Mid-March saw the first case of COVID-19 at Riker’s Island in New York City and within two weeks there were over 200 cases diagnosed within the facility.(242) Many correctional facilities have subsequently reported outbreaks of COVID-19 with related deaths.(242) Crude COVID-19 deaths, as of June 6, were 39 deaths per 100 000 prisoners in the United States, in contrast to 29 deaths per 100 000 in the US general population. COVID-19 deaths in prisoners were noted to be 5.5 times greater than the general population.(243)

There have been COVID-19 outbreaks in correctional facilities in several provinces in Canada to date.(244,245) As of November 25, there were 4308 tests performed, of which 477 were positive with an overall percent positivity of 11.1%. Quebec recorded the highest percent positivity at 18.1%.(245) British Columbia and Manitoba have similarly high percent positivity rates at 16.4% and 13.8%, respectively.

With cases in many facilities across the country and limited resources, questions have been raised about ill prison inmates under partial lockdown without adequate health care.(246) Many conditions within corrections facilities mirror the issues among other marginalized populations. Corrections see higher rates of First Nations, minorities and those with pre-existing medical conditions, including mental illness. PWUD experience higher incarceration rates where they may not be able to access harm reduction and associated services. Many required programs have struggled to maintain even low levels of service during the pandemic where resources were already limited and mitigating strategies have created new barriers.

Solutions do exist and include less incarceration and increased decarceration with community supported re-entry.(217) Accelerated release of individuals with non-violent offences with re-entry support has been seen to be a safe and effective prevention strategy during the pandemic.(247) Within facilities, individuals should be ensured adequate spacing and receive education to promote hygiene and sanitation.(241) When vaccines for COVID-19 become available, immunization of inmates and staff should be prioritized.(153) Screening, contact tracing and medical care must be available with the appropriate standards.

Sex and Gender Disparities

While sex is a biological attribute, gender is a social construct incorporating identity, roles and behaviours. Both sex and gender may influence infectious disease risk and outcomes, including those associated with COVID-19.(248)

COVID-19 disease outcomes, as discussed previously, appear to be influenced by sex. Global data has shown higher case rates, hospitalization rates and death among men.(249) There are a variety of influences, however, and disease outcomes vary by sex between countries. Men appear to be at higher risk of severe disease and death globally from COVID-19. Despite this the mortality rate is higher for women in Canada, accounting for 53.1% of deaths, with women only comprising 47.6% of hospitalizations and 37.2% of intensive care admissions as of November 27.(4) As previously mentioned this higher female mortality rate likely relates to more female deaths in those over 80 years, which is presumably due to longer life expectancy and thus a larger proportion of elderly females at risk compared to men. Researchers in Canada have called for greater sex-based analyses to be incorporated into research to inform clinical care and guide pandemic management.(250)

Indirect effects of the pandemic by gender have also been observed. With the closure of schools, there has been a reversion to traditional gender roles, with increased family care falling to women. (251) There have also been reports of increased gender-based violence (251) and an increase in the use of women's emergency shelters during the pandemic.(252) It is noted that the unprecedented scale of stay-at-home advisories likely resulted in separation from support networks and increased tensions in households—increasing the risk of domestic violence.(203) Impacts on the Canadian labour market have also disproportionately affected women, with increased unemployment and decreased employment recovery compared to men.(253,254)

Sex workers across Canada have experienced risks to their health and safety due to decreased access to services and safe locations for work.(255) Of approximately 2600 sex workers in Vancouver, it is estimated that up to 20% rely on their work to cover the cost of food, rent or illegal drugs, putting them at increased risk of infection as they cannot afford to stop working .(255)

Among those experiencing a compounding of vulnerabilities during the pandemic are sexual and gender minorities (SGM), which collectively include lesbian, gay, bisexual, transgender, two-spirit, queer, intersex and asexual (LGBT2SQIA+) people.(256) Structural barriers exist with decreased access to employment, housing and healthcare. Interpersonal discrimination can manifest through physical attacks or inequities through policy. Heightening of such discrimination has been reported in many countries during the pandemic. Strategies to mitigate viral transmission may disproportionately impact the health of SGM people in part due to inequitable social, economic and political conditions. In addition, SGM needs are often left out of research, policy and infrastructure. Research and health surveillance systems should include information pertaining to sexual orientation or gender identity to optimize the public health response to support SGM people.

People Living With Disability

People with disabilities—described as those who have long-term physical, mental, intellectual or sensory impairments which may hinder full and effective participation in society on an equal basis with others—represent 22% of the Canadian population.(257) Many are at higher risk of acquiring COVID-19 and of severe outcomes. Difficulties with hand hygiene, trouble understanding and/or following public health guidance on physical distancing, or the need of the visually impaired to physically touch objects for support or to obtain information place individuals at increased risk of viral acquisition.(258) Many disabled are also medically fragile and thus at increased risk for severe outcomes.

Many individuals with disabilities live in care homes or assisted living, putting them at increased risk of infection.(259) The disruption of services and supports have also had a major impact on those with disabilities.(258) Visitor and support person restrictions implemented to reduce viral transmission have put persons with disabilities who require personalized assistance at increased risk for adverse outcomes.(258)

It is also noted that many strategies and programs developed during the pandemic have been developed for those without disabilities in mind. The Canada Emergency Response Benefit (CERB), as an example, is not available to many who receive disability benefits. As a result, those with disabilities may end up receiving less financial support compared with other Canadians.(259)

As with other marginalized groups, there is a need for local assessment to identify issues, develop appropriate responses and support ongoing advocacy.(260) National disability organizations came together early in the pandemic and provided recommendations to the federal government.(260) Top priorities included the provision of accessible pandemic communication, service provider guidelines, task force development, income protection, and earmarking of funds to support the health of people with disabilities.

New pandemic response processes must also acknowledge the disabled community. COVID-19 screening and assessment centres, for example, must be accessible. Many provincial and territorial public health departments have worked with local public health authorities to establish designated, accessible pandemic assessment centres for those with disabilities.(258)

Unfortunately, at this time, there is a paucity of Canadian data pertaining to disabled communities during the pandemic.(261) The federal government, however, has put in place a COVID-19 Disability Advisory Group (CDAG), whose role is to advise the Minister of Employment, Workforce Development and Disability Inclusion on the real-time lived experiences of persons with disabilities during the pandemic.(258) By identifying challenges and systemic gaps through this process, the hope is for the opportunity to offer solutions.

References

1. Report of the WHO-China Joint Mission on Coronavirus Disease 2019 (COVID-19) [Internet]. 2020 [cited 2020 Nov 24]. Available from: [https://www.who.int/publications-detail/report-of-the-who-china-joint-mission-on-coronavirus-disease-2019-\(covid-19\)](https://www.who.int/publications-detail/report-of-the-who-china-joint-mission-on-coronavirus-disease-2019-(covid-19))
2. Silverstein WK, Stroud L, Cleghorn GE, Leis JA. First imported case of 2019 novel coronavirus in Canada, presenting as mild pneumonia. *The Lancet*. 2020 Feb;395(10225):734.
3. Public Health Agency of Canada. Canada COVID-19 Weekly Epidemiology Report (8 November to 14 November) [Internet]. 2020 [cited 2020 Nov 21]. Available from: <https://www.canada.ca/content/dam/phac-aspc/documents/services/diseases/2019-novel-coronavirus-infection/surv-covid19-weekly-epi-update-20201120-eng.pdf>
4. Public Health Agency of Canada. Coronavirus disease (COVID-19): Outbreak update [Internet]. Government of Canada. 2020 [cited 2020 Nov 21]. Available from: <https://www.canada.ca/en/public-health/services/diseases/2019-novel-coronavirus-infection.html#shr-pg0>
5. Godin A, Xia Y, Buckeridge DL, Mishra S, Douwes-Schultz D, Shen Y, et al. The role of case importation in explaining differences in early SARS-CoV-2 transmission dynamics in Canada - a mathematical modeling study of surveillance data. *Int J Infect Dis* [Internet]. 2020 Oct 25 [cited 2020 Nov 7];0(0). Available from: [https://www.ijidonline.com/article/S1201-9712\(20\)32251-7/abstract](https://www.ijidonline.com/article/S1201-9712(20)32251-7/abstract)
6. Angus Reid. COVID-19 Carelessness: Which Canadians say pandemic threat is 'overblown'? And how are they behaving in turn? [Internet]. Angus Reid Institute. 2020 [cited 2020 Nov 21]. Available from: <http://angusreid.org/covid-19-serious-vs-overblown/>
7. Anderson SC, Edwards AM, Yerlanov M, Mulberry N, Stockdale J, Iyaniwura SA, et al. Estimating the impact of COVID-19 control measures using a Bayesian model of physical distancing [Internet]. *Epidemiology*; 2020 Apr [cited 2020 Nov 8]. Available from: <http://medrxiv.org/lookup/doi/10.1101/2020.04.17.20070086>
8. Angus Reid. COVID-19 Compliance: One-in-five Canadians making little to no effort to stop coronavirus spread [Internet]. Angus Reid Institute. 2020 [cited 2020 Nov 8]. Available from: <http://angusreid.org/covid-compliance/>
9. Mallapaty S. Why COVID outbreaks look set to worsen this winter. *Nature*. 2020 Oct 29;586(7831):653–653.
10. Merow C, Urban MC. Seasonality and uncertainty in global COVID-19 growth rates. *Proc Natl Acad Sci*. 2020 Nov 3;117(44):27456–64.
11. Lapointe-Shaw L, Rader B, Astley CM, Hawkins JB, Bhatia D, Schatten WJ, et al. Web and phone-based COVID-19 syndromic surveillance in Canada: A cross-sectional study. *PLOS ONE*. 2020 Oct 2;15(10):e0239886.
12. Davies NG, Klepac P, Liu Y, Prem K, Jit M, Eggo RM. Age-dependent effects in the transmission and control of COVID-19 epidemics. *Nat Med*. 2020 Aug;26(8):1205–11.
13. Adam DC, Wu P, Wong JY, Lau EHY, Tsang TK, Cauchemez S, et al. Clustering and superspreading potential of SARS-CoV-2 infections in Hong Kong. *Nat Med*. 2020 Nov 1;26(11):1714–9.
14. Bi Q, Wu Y, Mei S, Ye C, Zou X, Zhang Z, et al. Epidemiology and transmission of COVID-19 in 391 cases and 1286 of their close contacts in Shenzhen, China: a retrospective cohort study. *Lancet Infect Dis*. 2020 Aug 1;20(8):911–9.
15. Mitra AR, Fergusson NA, Lloyd-Smith E, Wormsbecker A, Foster D, Karpov A, et al. Baseline characteristics and outcomes of patients with COVID-19 admitted to intensive care units in Vancouver, Canada: a case series. *CMAJ*. 2020 Jun 29;192(26):E694–701.
16. Mortality Analyses [Internet]. Johns Hopkins Coronavirus Resource Center. [cited 2020 Nov 26]. Available from: <https://coronavirus.jhu.edu/data/mortality>
17. Hoffmann C, Wolf E. Older age groups and country-specific case fatality rates of COVID-19 in Europe, USA and Canada. *Infection* [Internet]. 2020 Oct 24 [cited 2020 Nov 7]; Available from: <https://doi.org/10.1007/s15010-020-01538-w>
18. World Health Organization. Estimating mortality from COVID-19 [Internet]. 2020 [cited 2020 Nov 26]. Available from: <https://www.who.int/news-room/commentaries/detail/estimating-mortality-from-covid-19>
19. Mishra S, Wang L, Ma H, Yiu KCY, Paterson JM, Kim E, et al. Estimated surge in hospital and intensive care admission because of the coronavirus disease 2019 pandemic in the Greater Toronto Area, Canada: a mathematical modelling study. *CMAJ Open*. 2020 Jan 7;8(3):E593–604.
20. McConway K, Naismith J, Hunter P, Bird S. Expert reaction to the ONS infection survey for the UK [Internet]. Science Media Centre. 2020 [cited 2020 Nov 15]. Available from: <https://www.sciencemediacentre.org/expert-reaction-to-the-ons-infection-survey-for-the-uk/>
21. Chowell G, Abdirizak F, Lee S, Lee J, Jung E, Nishiura H, et al. Transmission characteristics of MERS and SARS in the healthcare setting: a comparative study. *BMC Med*. 2015 Sep 3;13(1):210.
22. Gallagher J. Covid: What is a circuit-breaker could one fight the virus? BBC News [Internet]. 2020 Nov 20 [cited 2020 Nov 21]; Available from: <https://www.bbc.com/news/health-54206582>
23. Chen Ji-P, Yap JC-H, Hsu LY, Teo YY. COVID-19 and Singapore: From Early Response to Circuit Breaker. *Ann Acad Med Singapore*. 2020;49(8):561–72.
24. Public Health Agency of Canada. Coronavirus disease (COVID-19): For health professionals [Internet]. *aem*. 2020 [cited 2021 Jan 24]. Available from: <https://www.canada.ca/en/public-health/services/diseases/2019-novel-coronavirus-infection/health-professionals.html#a4>
25. Petersen E, Koopmans M, Go U, Hamer DH, Petrosillo N, Castelli F, et al. Comparing SARS-CoV-2 with SARS-CoV and influenza pandemics. *Lancet Infect Dis*. 2020 Sep 1;20(9):e238–44.

26. Liu Y, Gayle AA, Wilder-Smith A, Rocklöv J. The reproductive number of COVID-19 is higher compared to SARS coronavirus. *J Travel Med* [Internet]. 2020 Mar 13 [cited 2020 Jun 12];27(taaa021). Available from: <https://doi.org/10.1093/jtm/taaa021>
27. Zhang S, Diao M, Yu W, Pei L, Lin Z, Chen D. Estimation of the reproductive number of novel coronavirus (COVID-19) and the probable outbreak size on the Diamond Princess cruise ship: A data-driven analysis. *Int J Infect Dis*. 2020 Apr 1;93:201–4.
28. Joe Hasell. Which countries have protected both health and the economy in the pandemic? [Internet]. *Our World in Data*. 2020 [cited 2021 Jan 22]. Available from: <https://ourworldindata.org/covid-health-economy>
29. Paes-Sousa R, Millett C, Rocha R, Barreto ML, Hone T. Science misuse and polarised political narratives in the COVID-19 response. *The Lancet*. 2020 Nov;396(10263):1635–6.
30. Chetty R, Friedman J, Hendren N, Stepner M, Team TOI. The Economic Impacts of COVID-19: Evidence from a New Public Database Built Using Private Sector Data [Internet]. Cambridge, MA: National Bureau of Economic Research; 2020 Jun [cited 2021 Jan 22] p. w27431. Report No.: w27431. Available from: <http://www.nber.org/papers/w27431.pdf>
31. Coronavirus: Here's a timeline of COVID-19 cases in Canada [Internet]. *Global News*. 2020 [cited 2020 Nov 15]. Available from: <https://globalnews.ca/news/6627505/coronavirus-covid-canada-timeline/>
32. Canadian Institute for Health Information. COVID-19 Intervention Timeline in Canada [Internet]. [cited 2020 Nov 21]. Available from: <https://www.cihi.ca/en/covid-19-intervention-timeline-in-canada>
33. Quebec schools, universities and daycares closed for 2 weeks [Internet]. *Canadian Broadcasting Corporation*. 2020 [cited 2020 Nov 21]. Available from: <https://www.cbc.ca/news/canada/montreal/covid19-qc-march13-1.5496340>
34. Pictou N. The 'Atlantic bubble' has largely succeeded in keeping out COVID-19. But can it last? *The Globe and Mail* [Internet]. 2020 Nov 11 [cited 2020 Nov 11]; Available from: <https://www.theglobeandmail.com/canada/article-the-atlantic-bubble-has-largely-succeeded-in-keeping-out-covid-1/>
35. Mercer G. How a funeral home in Newfoundland became the source of a major coronavirus outbreak. *The Globe and Mail* [Internet]. 2020 Mar 27 [cited 2020 Nov 21]; Available from: <https://www.theglobeandmail.com/canada/article-how-a-funeral-home-in-newfoundland-became-the-source-of-a-major/>
36. Quon A. Nova Scotia review of Northwood COVID-19 outbreak to be completed by September [Internet]. *Global News*. 2020 [cited 2020 Nov 21]. Available from: <https://globalnews.ca/news/7122256/nova-scotia-review-long-term-care-home-coronavirus/>
37. New Brunswick COVID-19 Dashboard [Internet]. *ArcGIS Online*. [cited 2020 Nov 21]. Available from: <https://www.arcgis.com/apps/opsdashboard/index.html#/09bdd1931b8644d1ba70e2ee8e79675f>
38. Rose C, Smolina K, CHE BCCDC Surveillance Team. Epidemiology of COVID-19 in BC: The first 3 months. *BC Med J*. 2020 May 11;62(5):165.
39. McElroy J. Why B.C. is flattening the COVID-19 curve while numbers in central Canada surge | *CBC News* [Internet]. *Canadian Broadcasting Corporation*. 2020 [cited 2020 Nov 22]. Available from: <https://www.cbc.ca/news/canada/british-columbia/bc-ontario-quebec-covid-19-1.5524056>
40. Vogel L. COVID-19: A timeline of Canada's first-wave response [Internet]. *CMAJ News*. 2020 [cited 2020 Nov 22]. Available from: <https://cmajnews.com/2020/06/12/coronavirus-1095847/>
41. Aiello R. Tam warns of "explosive" second COVID-19 wave if reopening mishandled [Internet]. *CTV News*. 2020 [cited 2020 Nov 22]. Available from: <https://www.ctvnews.ca/health/coronavirus/tam-warns-of-explosive-second-covid-19-wave-if-reopening-mishandled-1.4968986>
42. 1918 Pandemic Influenza: Three Waves [Internet]. *Centers for Disease Control and Prevention*. 2018 [cited 2020 Nov 21]. Available from: <https://www.cdc.gov/flu/pandemic-resources/1918-commemoration/three-waves.htm>
43. Driscoll K. Nunavut enacts strictest travel regulations in Canada. *APTN News* [Internet]. 2020 Mar 24 [cited 2020 Nov 29]; Available from: <https://www.aptnnews.ca/national-news/nunavut-enacts-strictest-travel-regulations-in-canada/>
44. George J. Nunavut's Kivalliq communities adopt more COVID-19 preventive measures [Internet]. *Nunatsiaq News*. 2020 [cited 2020 Nov 29]. Available from: <https://nunatsiaq.com/stories/article/after-territorys-first-covid-19-case-nunavut-communities-adopt-preventative-measures/>
45. George J. To boost COVID-19 prevention efforts, more Nunavut hamlets adopt booze bans [Internet]. *Nunatsiaq News*. 2020 [cited 2020 Nov 29]. Available from: <https://nunatsiaq.com/stories/article/to-boost-covid-19-prevention-efforts-more-nunavut-hamlets-adopt-booze-bans/>
46. Neustaeter B, Ho S. Nunavut premier warns overcrowding could worsen COVID-19 outbreak [Internet]. *CTV News*. 2020 [cited 2020 Nov 27]. Available from: <https://www.ctvnews.ca/health/coronavirus/nunavut-premier-warns-overcrowding-could-worsen-covid-19-outbreak-1.5191063>
47. Lefebvre C. Manitoba working to increase ICU capacity, more surgeries postponed [Internet]. *CTV News*. 2020 [cited 2020 Nov 29]. Available from: <https://winnipeg.ctvnews.ca/manitoba-working-to-increase-icu-capacity-more-surgeries-postponed-1.5174974>
48. Dyer K. Demands on Alberta's health-care system exceeding capacity during pandemic: ICU doctor [Internet]. *CTV News*. 2020 [cited 2020 Nov 29]. Available from: <https://edmonton.ctvnews.ca/demands-on-alberta-s-health-care-system-exceeding-capacity-during-pandemic-icu-doctor-1.5185768>
49. Peterson J. Saskatoon RUH moves to expand ICU capacity as COVID cases rise [Internet]. *Canadian Broadcasting Corporation*. 2020 [cited 2020 Nov 29]. Available from: <https://www.cbc.ca/news/canada/saskatchewan/ruh-icu-more-space-1.5796140>
50. Groff M. New Brunswick bursts what was left of Atlantic bubble [Internet]. *Halifax Today*. 2020 [cited 2020 Nov 29]. Available from: <https://www.halifaxtoday.ca/coronavirus-covid-19-local-news/new-brunswick-bursts-what-was-left-of-atlantic-bubble-3130967>

51. COVID-19 Scientific Advisory Group. COVID-19 Scientific Advisory Group Rapid Response Report: What is the effectiveness of wearing medical masks, including home-made masks, to reduce the spread of COVID-19 in the community? [Internet]. Alberta Health Services; 2020 [cited 2020 Nov 15]. Available from: <https://www.albertahealthservices.ca/assets/info/ppih/if-ppih-covid-19-sag-mask-use-in-community-rapid-review.pdf>
52. Chu DK, Akl EA, Duda S, Solo K, Yaacoub S, Schünemann HJ, et al. Physical distancing, face masks, and eye protection to prevent person-to-person transmission of SARS-CoV-2 and COVID-19: a systematic review and meta-analysis. *The Lancet*. 2020 Jun;395(10242):1973–87.
53. Global projections of lives saved from COVID-19 with universal mask use [Internet]. *Public and Global Health*; 2020 Oct [cited 2021 Jan 17]. Available from: <http://medrxiv.org/lookup/doi/10.1101/2020.10.08.20209510>
54. IHME COVID-19 Forecasting Team. Modeling COVID-19 scenarios for the United States. *Nat Med*. 2021 Jan;27(1):94–105.
55. Bhattacharjee S, Bahl P, Chughtai AA, MacIntyre CR. Last-resort strategies during mask shortages: optimal design features of cloth masks and decontamination of disposable masks during the COVID-19 pandemic. *BMJ Open Respir Res*. 2020 Sep;7(1):e000698.
56. Pindera E, Thompson S. Masks now mandatory in Winnipeg, surrounding areas [Internet]. *Global News*. 2020 [cited 2020 Nov 29]. Available from: <https://globalnews.ca/news/7361368/masks-now-mandatory-in-winnipeg-surrounding-areas/>
57. Province Announces Mandatory Masks in Indoor Public Places [Internet]. Government of Nova Scotia. 2020 [cited 2020 Nov 15]. Available from: <https://novascotia.ca/news/release/?id=20200724004>
58. Province of Manitoba: Pandemic Response System [Internet]. Province of Manitoba. [cited 2020 Nov 29]. Available from: <http://www.gov.mb.ca/covid19/restartmb/prs/index.html>
59. Masks to become mandatory in Prince Edward Island [Internet]. Government of Prince Edward Island. 2020 [cited 2020 Nov 29]. Available from: <https://www.princeedwardisland.ca/en/news/masks-become-mandatory-prince-edward-island>
60. COVID-19: Mask requirements [Internet]. Government of Alberta. [cited 2020 Nov 29]. Available from: <https://www.alberta.ca/masks.aspx>
61. Masks now mandatory for patients, staff, visitors in B.C. health-care facilities [Internet]. Canadian Broadcasting Corporation. 2020 [cited 2020 Nov 29]. Available from: <https://www.cbc.ca/news/canada/british-columbia/masks-health-care-facilities-bc-now-mandatory-1.5793478>
62. COVID-19: Non-medical masks [Internet]. Government of Northwest Territories. Government of the Northwest Territories; 2020 [cited 2020 Nov 29]. Available from: <https://www.gov.nt.ca/covid-19/en/services/prevention/non-medical-masks>
63. Nunavut confirms 8 new COVID-19 cases Monday, territory-wide restriction period to start Wednesday [Internet]. Canadian Broadcasting Corporation. 2020 [cited 2020 Nov 29]. Available from: <https://www.cbc.ca/news/canada/north/nunavut-premier-give-update-on-covid-19-outbreak-1.5803373>
64. Wearing a mask in Yukon during COVID-19 [Internet]. Government of Yukon. 2020 [cited 2020 Nov 29]. Available from: <https://yukon.ca/en/health-and-wellness/covid-19-information/your-health-covid-19/wearing-non-medical-masks-yukon>
65. Province enforces tighter restrictions in orange-phase regions [Internet]. Canadian Broadcasting Corporation. 2020 [cited 2020 Nov 29]. Available from: <https://www.cbc.ca/news/canada/new-brunswick/new-brunswick-orange-zones-1.5812102>
66. Pan-Canadian COVID-19 Testing and Screening Guidance: Technical guidance and implementation plan [Internet]. Government of Canada. 2020 [cited 2020 Nov 29]. Available from: <https://www.canada.ca/en/health-canada/services/drugs-health-products/covid19-industry/medical-devices/testing/pan-canadian-guidance.html>
67. Schneider EC. Failing the Test — The Tragic Data Gap Undermining the U.S. Pandemic Response. *N Engl J Med*. 2020 Jul 23;383(4):299–302.
68. Maxmen A. Thousands of coronavirus tests are going unused in US labs. *Nature*. 2020 Apr;580(7803):312–3.
69. Dowdy D, D’Souza G. COVID-19 Testing: Understanding the “Percent Positive” [Internet]. Johns Hopkins Bloomberg School of Public Health. 2020 [cited 2020 Nov 22]. Available from: <https://www.jhsph.edu/covid-19/articles/covid-19-testing-understanding-the-percent-positive.html>
70. Data on COVID-19 in Québec [Internet]. Government of Quebec. 2020 [cited 2020 Dec 8]. Available from: <https://www.quebec.ca/en/health/health-issues/a-z/2019-coronavirus/situation-coronavirus-in-quebec/>
71. Testing for COVID-19 [Internet]. Government of Quebec. [cited 2020 Nov 11]. Available from: <https://www.quebec.ca/en/health/health-issues/a-z/2019-coronavirus/testing-for-covid-19/>
72. COVID-19: Data visualization [Internet]. Government of Nova Scotia. [cited 2020 Nov 10]. Available from: <https://novascotia.ca/coronavirus/data/>
73. Grant T. Nova Scotia’s first rapid COVID-19 testing site pops up in Halifax nightclub [Internet]. Canadian Broadcasting Corporation. 2020 [cited 2020 Nov 22]. Available from: <https://www.cbc.ca/news/canada/nova-scotia/halifax-rapid-testing-covid-the-dome-1.5811875>
74. COVID-19 Testing for People Working With Vulnerable Populations FAQ [Internet]. Government of New Brunswick; 2020 [cited 2020 Nov 22]. Available from: <https://nbn.ca/wp-content/uploads/2020/06/Bulletin-70e-COVID-19-Testing-for-People-Working-with-Vulnerable-Populations-Sep-10-2020.pdf>
75. Cases and Risk of COVID-19 in Manitoba [Internet]. Province of Manitoba. [cited 2020 Nov 10]. Available from: <http://www.gov.mb.ca/covid19/updates/cases.html>
76. Manitoba Launches Plan to Implement Targeted, Rapid Testing for COVID-19 to Protect Manitobans [Internet]. Province of Manitoba. 2020 [cited 2020 Nov 11]. Available from: <https://news.gov.mb.ca/news/index.html?item=49570>
77. Leclerc QJ, Fuller NM, Knight LE, CMMID COVID-19 Working Group, Funk S, Knight GM. What settings have been linked to SARS-CoV-2 transmission clusters? *Wellcome Open Res*. 2020 Jun 5;5:83.

- 78.** Canadian Institute for Health Information. COVID-19 cases and deaths among health care workers in Canada [Internet]. [cited 2020 Dec 1]. Available from: <https://www.cihi.ca/en/covid-19-cases-and-deaths-among-health-care-workers-in-canada>
- 79.** Government of Alberta. Guidance for Industry-Initiated COVID-19 Testing [Internet]. 2020. Available from: <https://www.alberta.ca/assets/documents/covid-19-relaunch-guidance-industry-initiated-covid-19-testing.pdf>
- 80.** Yvette Brend. U.S. television productions stalled in Vancouver by bottleneck in COVID-19 testing [Internet]. CBC News. 2020 [cited 2020 Nov 27]. Available from: <https://www.cbc.ca/news/canada/british-columbia/tv-film-production-vancouver-pandemic-1.5744908>
- 81.** Government of Alberta. Cases in Alberta [Internet]. COVID-19 info for Albertans. [cited 2020 Nov 29]. Available from: <https://www.alberta.ca/covid-19-alberta-data.aspx>
- 82.** Schwartz KL, Achonu C, Buchan SA, Brown KA, Lee B, Whelan M, et al. COVID-19 infections among Healthcare Workers and Transmission within Households [Internet]. Infectious Diseases (except HIV/AIDS); 2020 Jun [cited 2020 Dec 1]. Available from: <http://medrxiv.org/lookup/doi/10.1101/2020.06.12.20129619>
- 83.** Brend Y, Nov 05 EU-C: CN: P, November 5 2020 4:00 AM PT | Last Updated: Top doctor says B.C. is sharing data on health care workers with COVID-19, with some caveats | CBC News [Internet]. CBC. 2020 [cited 2020 Nov 29]. Available from: <https://www.cbc.ca/news/canada/british-columbia/bc-data-sharing-health-workers-phac-holes-1.5788386>
- 84.** Government of Saskatchewan. COVID-19 Active Outbreaks [Internet]. COVID-19. [cited 2020 Nov 27]. Available from: <https://www.saskatchewan.ca/government/health-care-administration-and-provider-resources/treatment-procedures-and-guidelines/emerging-public-health-issues/2019-novel-coronavirus/latest-updates/covid-19-active-outbreaks>
- 85.** Government of Manitoba. COVID-19 Outbreaks in Manitoba [Internet]. Provincial COVID-19 Surveillance. 2020 [cited 2020 Nov 27]. Available from: https://www.gov.mb.ca/health/publichealth/surveillance/covid-19/week_47/outbreaks/outbreak_table.html
- 86.** Public Health Ontario. Ontario COVID-19 Data Tool [Internet]. COVID-19 Data and Surveillance. [cited 2020 Nov 27]. Available from: [https://www.publichealthontario.ca/en/Data and Analysis/Infectious Disease/COVID 19 Data Surveillance/COVID 19 Data Tool](https://www.publichealthontario.ca/en/Data%20and%20Analysis/Infectious%20Disease/COVID%2019%20Data%20Surveillance/COVID%2019%20Data%20Tool)
- 87.** Public Health Services Authority. Current Outbreaks [Internet]. [cited 2020 Nov 27]. Available from: <http://www.phsa.ca/current-outbreaks>
- 88.** Government of New Brunswick. Coronavirus (COVID-19) [Internet]. [cited 2020 Nov 30]. Available from: <https://www2.gnb.ca/content/gnb/en/corporate/promo/covid-19.html#cases>
- 89.** Government of Nova Scotia. Coronavirus (COVID-19): alerts, news and data [Internet]. Coronavirus (COVID-19). [cited 2020 Nov 30]. Available from: <https://novascotia.ca/coronavirus/alerts-notice/>
- 90.** Newfoundland and Labrador: Department of Health and Community Services. Outbreaks [Internet]. COVID-19. [cited 2020 Nov 30]. Available from: <https://www.gov.nl.ca/covid-19/outbreaks/>
- 91.** Government of Yukon. Case counts: COVID-19 [Internet]. [cited 2020 Nov 30]. Available from: <https://yukon.ca/en/case-counts-covid-19>
- 92.** Government of Northwest Territories. Exposure Notifications [Internet]. Government of the Northwest Territories; [cited 2020 Nov 30]. Available from: <https://www.gov.nt.ca/covid-19/en/services/exposure-notifications>
- 93.** Government of Prince Edward Island. News [Internet]. [cited 3030 Nov 30]. Available from: <https://www.princeedwardisland.ca/en/news>
- 94.** Government of Canada. Military response to COVID-19 [Internet]. aem. [cited 2020 Dec 5]. Available from: <https://www.canada.ca/en/department-national-defence/campaigns/covid-19-military-response.html>
- 95.** Canadian Institute for Health Information. Access Data and Reports [Internet]. [cited 2020 Nov 30]. Available from: https://www.cihi.ca/en/access-data-reports/results?fs3%5B0%5D=primary_theme%3A673&query=&page=0
- 96.** Government of Ontario. COVID-19 case data: Glossary [Internet]. COVID-19 (coronavirus) in Ontario. [cited 2020 Nov 27]. Available from: <https://covid-19.ontario.ca/data/covid-19-case-data-glossary>
- 97.** Marotta S. Quebec workplaces linked to almost 30% of new coronavirus cases: data - The Globe and Mail [Internet]. The Globe and Mail. 2020 [cited 2020 Nov 28]. Available from: <https://www.theglobeandmail.com/canada/article-quebec-workplaces-linked-to-almost-30-of-new-coronavirus-cases-data/>
- 98.** Public Health Agency of Canada. Coronavirus disease (COVID-19): Prevention and risks [Internet]. Coronavirus disease (COVID-19). [cited 2020 Nov 28]. Available from: <https://www.canada.ca/en/public-health/services/diseases/2019-novel-coronavirus-infection/prevention-risks.html#p>
- 99.** World Health Organization. COVID-19: Avoid the Three Cs [Internet]. Infographics. [cited 2020 Nov 28]. Available from: <https://www.who.int/brunei/news/infographics---english>
- 100.** Ontario's Long-Term Care COVID-19 Commission - Interim Recommendations [Internet]. Ontario's Long-term Care Commission. 2020 [cited 2020 Dec 3]. Available from: <http://www.ltccommission-commissionsld.ca/ir/index.html>
- 101.** Pandemic Experience in the Long-Term Care Sector: How Does Canada Compare With Other Countries? [Internet]. Canadian Institute for Health Information; [cited 2020 Dec 2] p. 9. Available from: <https://www.cihi.ca/sites/default/files/document/covid-19-rapid-response-long-term-care-snapshot-en.pdf>
- 102.** McMichael TM, Clark S, Pogojans S, Kay M, Lewis J, Baer A, et al. COVID-19 in a Long-Term Care Facility — King County, Washington, February 27–March 9, 2020. MMWR Morb Mortal Wkly Rep. 2020 Mar 27;69(12):339–42.
- 103.** Public Health Agency of Canada. Long term care home COVID-19 infection prevention and control: Interim guidance [Internet]. aem. 2020 [cited 2020 Dec 5]. Available from: <https://www.canada.ca/en/public-health/services/diseases/2019-novel-coronavirus-infection/prevent-control-covid-19-long-term-care-homes.html>

- 104.** Bui DP, See I, Hesse EM, Varela K, Harvey RR, August EM, et al. Association Between CMS Quality Ratings and COVID-19 Outbreaks in Nursing Homes — West Virginia, March 17–June 11, 2020. *MMWR Morb Mortal Wkly Rep.* 2020 Sep 18;69(37):1300–4.
- 105.** McGarry BE, SteelFisher GK, Grabowski DC, Barnett ML. COVID-19 Test Result Turnaround Time for Residents and Staff in US Nursing Homes. *JAMA Intern Med [Internet].* 2020 Oct 30 [cited 2020 Jul 13]; Available from: <https://doi.org/10.1001/jamainternmed.2020.7330>
- 106.** Hatfield KM, Reddy SC, Forsberg K, Korhonen L, Garner K, Gulley T, et al. Facility-Wide Testing for SARS-CoV-2 in Nursing Homes — Seven U.S. Jurisdictions, March–June 2020. *MMWR Morb Mortal Wkly Rep.* 2020 Aug 11;69(32):1095–9.
- 107.** Brown KA, Jones A, Daneman N, Chan AK, Schwartz KL, Garber GE, et al. Association Between Nursing Home Crowding and COVID-19 Infection and Mortality in Ontario, Canada. *JAMA Intern Med [Internet].* 2020 Nov 9 [cited 2020 Jul 13]; Available from: <https://doi.org/10.1001/jamainternmed.2020.6466>
- 108.** Kain DC, McCreight LJ, Johnstone J. Dealing with coronavirus disease 2019 (COVID-19) outbreaks in long-term care homes: A protocol for room moving and cohorting. *Infect Control Hosp Epidemiol.* 2020 Oct 28;1–2.
- 109.** Stall NM, Jones A, Brown KA, Rochon PA, Costa AP. For-profit long-term care homes and the risk of COVID-19 outbreaks and resident deaths. *Can Med Assoc J.* 2020 Aug 17;192(33):E946–55.
- 110.** Stall NM, Brown KA, Maltsev A, Jones A, Costa AP, Allen V, et al. COVID-19 and Ontario’s Long-Term Care Homes [Internet]. Ontario COVID-19 Science Advisory Table; 2021 Jan [cited 2021 Jan 24]. Available from: <https://covid19-sciencetable.ca/sciencebrief/covid-19-and-ontarios-long-term-care-homes-2/>
- 111.** Perez-Saez J, Lauer SA, Kaiser L, Regard S, Delaporte E, Guessous I, et al. Serology-informed estimates of SARS-CoV-2 infection fatality risk in Geneva, Switzerland. *Lancet Infect Dis.* 2020 Jul;S1473309920305843.
- 112.** Price-Haywood EG, Burton J, Fort D, Seoane L. Hospitalization and Mortality among Black Patients and White Patients with Covid-19. *N Engl J Med.* 2020 May 27;382(26):2534–43.
- 113.** Pat Armstrong, Véronique Boscart, Gail Donner, Francine Ducharme, Carole Estabrooks, Colleen Flood, et al. Restoring Trust: COVID-19 and The Future of Long-Term Care [Internet]. Royal Society of Canada; 2020. Available from: https://rsc-src.ca/sites/default/files/LTC%20PB%20%2B%20ES_EN_0.pdf
- 114.** Stall NM, Farquharson C, Fan Lun C, Wiesenfeld L, Loftus CA, Kain D, et al. A Hospital Partnership with a Nursing Home Experiencing a COVID-19 Outbreak: Description of a Multiphase Emergency Response in Toronto, Canada. *J Am Geriatr Soc.* 2020 Jul;68(7):1376–81.
- 115.** Elrod JK, Fortenberry JL Jr. The hub-and-spoke organization design: an avenue for serving patients well. *BMC Health Serv Res.* 2017 Jul 11;17(Suppl 1):457–457.
- 116.** Stall NM, Johnstone J, McGeer AJ, Dhuper M, Dunning J, Sinha SK. Finding the Right Balance: An Evidence-Informed Guidance Document to Support the Re-Opening of Canadian Nursing Homes to Family Caregivers and Visitors during the Coronavirus Disease 2019 Pandemic. *J Am Med Dir Assoc.* 2020 Oct;21(10):1365–1370.e7.
- 117.** Kain D, McCreight E, Mazzulli T, Gubbay JB, Rea E, Johnstone J. Diagnostic Sensitivity of Nasopharyngeal RT-PCR in a Long-Term Care Home Outbreak. *J Am Med Dir Assoc.* 2020 Nov;21(11):1570–1572.e1.
- 118.** Kennedy M, Helfand BKI, Gou RY, Gartaganis SL, Webb M, Moccia JM, et al. Delirium in Older Patients With COVID-19 Presenting to the Emergency Department. *JAMA Netw Open.* 2020 Nov 19;3(11):e2029540–e2029540.
- 119.** Temkin Greener H, Guo W, Mao Y, Cai X, Li Y. COVID-19 Pandemic in Assisted Living Communities: Results from Seven States. *J Am Geriatr Soc.* 2020 Oct 7;jgs.16850.
- 120.** Global Education Coalition: COVID-19 Education Response [Internet]. UNESCO. 2020 [cited 2020 Dec 4]. Available from: <https://en.unesco.org/covid19/educationresponse/globalcoalition>
- 121.** Hoffman JA, Miller EA. Addressing the Consequences of School Closure Due to COVID-19 on Children’s Physical and Mental Well-Being. *World Med Health Policy.* 2020 Sep;12(3):300–10.
- 122.** Munro APS, Faust SN. COVID-19 in children: current evidence and key questions. *Curr Opin Infect Dis.* 2020 Dec;33(6):540–7.
- 123.** ESTUDIO ENE-COVID19: PRIMERA RONDA ESTUDIO NACIONAL DE SERO-EPIDEMIOLOGÍA DE LA INFECCIÓN POR SARS-COV-2 EN ESPAÑA INFORME PRELIMINAR 13 DE MAYO DE 2020 [Internet]. Gobierno de España, Ministerio de Sanidad; [cited 2020 Dec 4]. Available from: https://www.msbs.gob.es/ciudadanos/ene-covid/docs/ESTUDIO_ENE-COVID19_PRIMERA_RONDA_INFORME_PRELIMINAR.pdf
- 124.** Pollán M, Pérez-Gómez B, Pastor-Barriuso R, Oteo J, Hernán MA, Pérez-Olmeda M, et al. Prevalence of SARS-CoV-2 in Spain (ENE-COVID): a nationwide, population-based seroepidemiological study. *The Lancet.* 2020 Aug;396(10250):535–44.
- 125.** Stringhini S, Wisniak A, Piumatti G, Azman AS, Lauer SA, Baysson H, et al. Seroprevalence of anti-SARS-CoV-2 IgG antibodies in Geneva, Switzerland (SEROCoV-POP): a population-based study. *The Lancet.* 2020 Aug;396(10247):313–9.
- 126.** Ulyte A, Radtke T, Abela IA, Haile SH, Blankenberger J, Jung R, et al. Variation in SARS-CoV-2 seroprevalence in school-children across districts, schools and classes [Internet]. *Infectious Diseases (except HIV/AIDS);* 2020 Sep [cited 2020 Dec 7]. Available from: <http://medrxiv.org/lookup/doi/10.1101/2020.09.18.20191254>
- 127.** Viner RM, Mytton OT, Bonell C, Melendez-Torres GJ, Ward J, Hudson L, et al. Susceptibility to SARS-CoV-2 Infection Among Children and Adolescents Compared With Adults: A Systematic Review and Meta-analysis. *JAMA Pediatr [Internet].* 2020 Sep 25 [cited 2020 Aug 13]; Available from: <https://doi.org/10.1001/jamapediatrics.2020.4573>
- 128.** Felsenstein S, Hedrich CM. COVID-19 in children and young people. *Lancet Rheumatol.* 2020 Sep;2(9):e514–6.
- 129.** Ng KW, Faulkner N, Cornish GH, Rosa A, Harvey R, Hussain S, et al. Preexisting and de novo humoral immunity to SARS-CoV-2 in humans. *Science.* 2020 Nov 6;eabe1107.

- 130.** Laxminarayan R, Wahl B, Dudala SR, Gopal K, Mohan B C, Neelima S, et al. Epidemiology and transmission dynamics of COVID-19 in two Indian states. *Science*. 2020 Nov 6;370(6517):691.
- 131.** Children, school and COVID-19 [Internet]. National Institute for Public Health and the Environment. [cited 2020 Dec 4]. Available from: <https://www.rivm.nl/en/novel-coronavirus-covid-19/children-and-covid-19>
- 132.** COVID-19:Guidance for School Reopening [Internet]. SickKids; 2020 [cited 2020 Dec 4]. Available from: <http://www.sickkids.ca/PDFs/About-SickKids/81407-COVID19-Recommendations-for-School-Reopening-SickKids.pdf>
- 133.** Panovska-Griffiths J, Kerr CC, Stuart RM, Mistry D, Klein DJ, Viner RM, et al. Determining the optimal strategy for reopening schools, the impact of test and trace interventions, and the risk of occurrence of a second COVID-19 epidemic wave in the UK: a modelling study. *Lancet Child Adolesc Health*. 2020 Nov;4(11):817–27.
- 134.** COVID-19 in children and the role of school settings in COVID-19 transmission. European Centre for Disease Prevention and Control; 2020.
- 135.** Stein-Zamir C, Abramson N, Shoob H, Libal E, Bitan M, Cardash T, et al. A large COVID-19 outbreak in a high school 10 days after schools' reopening, Israel, May 2020. *Euro Surveill Bull Eur Sur Mal Transm Eur Commun Dis Bull*. 2020 Jul;25(29):2001352.
- 136.** Larosa E, Djuric O, Cassinadri M, Cilloni S, Bisaccia E, Vicentini M, et al. Secondary transmission of COVID-19 in preschool and school settings after their reopening in northern Italy: a population-based study [Internet]. *Epidemiology*; 2020 Nov [cited 2020 Dec 7]. Available from: <http://medrxiv.org/lookup/doi/10.1101/2020.11.17.20229583>
- 137.** Ismail SA, Saliba V, Lopez Bernal JA, Ramsay ME, Ladhani SN. SARS-CoV-2 infection and transmission in educational settings: cross-sectional analysis of clusters and outbreaks in England [Internet]. *Public and Global Health*; 2020 Aug [cited 2020 Dec 6]. Available from: <http://medrxiv.org/lookup/doi/10.1101/2020.08.21.20178574>
- 138.** Sunnee Billingsley, Brandén M, Siddhartha Aradhya, Drefahl S, Andersson G, Mussino E. Deaths in the frontline: Occupation-specific COVID-19 mortality risks in Sweden. 2020;899290 Bytes.
- 139.** Vlachos J, Hertegård E, Svaleryd H. School closures and SARS-CoV-2. Evidence from Sweden's partial school closure [Internet]. *Epidemiology*; 2020 Oct [cited 2020 Dec 7]. Available from: <http://medrxiv.org/lookup/doi/10.1101/2020.10.13.20211359>
- 140.** Lundkvist Å, Hanson S, Olsen B. Pronounced difference in Covid-19 antibody prevalence indicates cluster transmission in Stockholm, Sweden. *Infect Ecol Epidemiol*. 2020 Jan 1;10(1):1806505.
- 141.** Public Health Agency of Canada. Canada COVID-19 Weekly Epidemiology Report (22 November to 28 November) [Internet]. 2020 [cited 2020 Dec 5]. Available from: <https://www.canada.ca/content/dam/phac-aspc/documents/services/diseases/2019-novel-coronavirus-infection/surv-covid19-weekly-epi-update-20201204-eng.pdf>
- 142.** Tracking Canada's education systems' response to COVID-19 [Internet]. People for Education. 2020 [cited 2020 Dec 4]. Available from: <https://peopleforeducation.ca/our-work/tracking-canadas-education-systems-response-to-covid-19/>
- 143.** Wu Z, McGoogan JM. Characteristics of and Important Lessons From the Coronavirus Disease 2019 (COVID-19) Outbreak in China: Summary of a Report of 72 314 Cases From the Chinese Center for Disease Control and Prevention. *JAMA*. 2020 Apr 7;323(13):1239.
- 144.** Public Health Agency of Canada. Coronavirus disease 2019 (COVID-19): Epidemiology update [Internet]. COVID-19 in Canada. [cited 2020 Nov 22]. Available from: <https://health-infobase.canada.ca/covid-19/epidemiological-summary-covid-19-cases.html#a5>
- 145.** Wang D, Hu B, Hu C, Zhu F, Liu X, Zhang J, et al. Clinical Characteristics of 138 Hospitalized Patients With 2019 Novel Coronavirus–Infected Pneumonia in Wuhan, China. *JAMA*. 2020 Mar 17;323(11):1061.
- 146.** Richardson S, Hirsch JS, Narasimhan M, Crawford JM, McGinn T, Davidson KW, et al. Presenting Characteristics, Comorbidities, and Outcomes Among 5700 Patients Hospitalized With COVID-19 in the New York City Area. *JAMA*. 2020 May 26;323(20):2052.
- 147.** Livingston E, Bucher K. Coronavirus Disease 2019 (COVID-19) in Italy. *JAMA*. 2020 Apr 14;323(14):1335.
- 148.** Zhou F, Yu T, Du R, Fan G, Liu Y, Liu Z, et al. Clinical course and risk factors for mortality of adult inpatients with COVID-19 in Wuhan, China: a retrospective cohort study. *The Lancet*. 2020 Mar;395(10229):1054–62.
- 149.** Petrilli CM, Jones SA, Yang J, Rajagopalan H, O'Donnell L, Chernyak Y, et al. Factors associated with hospital admission and critical illness among 5279 people with coronavirus disease 2019 in New York City: prospective cohort study. *The BMJ* [Internet]. 2020 [cited 2020 Dec 1];369. Available from: <https://www.ncbi.nlm.nih.gov/pmc/articles/PMC7243801/>
- 150.** Dong Y, Mo X, Hu Y, Qi X, Jiang F, Jiang Z, et al. Epidemiology of COVID-19 Among Children in China. *Pediatrics*. 2020 Jun;145(6):e20200702.
- 151.** Preliminary Estimates of the Prevalence of Selected Underlying Health Conditions Among Patients with Coronavirus Disease 2019 — United States, February 12–March 28, 2020. *MMWR Morb Mortal Wkly Rep* [Internet]. 2020 [cited 2020 Dec 1];69. Available from: <https://www.cdc.gov/mmwr/volumes/69/wr/mm6913e2.htm>
- 152.** Arentz M, Yim E, Klaff L, Lokhandwala S, Riedo FX, Chong M, et al. Characteristics and Outcomes of 21 Critically Ill Patients With COVID-19 in Washington State. *JAMA*. 2020 Apr 28;323(16):1612.
- 153.** Ismail SJ, Zhao L, Tunis MC, Deeks SL, Quach C. Key populations for early COVID-19 immunization: preliminary guidance for policy. *CMAJ*. 2020 Nov 30;192(48):E1620–32.
- 154.** Allotey J, Stallings E, Bonet M, Yap M, Chatterjee S, Kew T, et al. Clinical manifestations, risk factors, and maternal and perinatal outcomes of coronavirus disease 2019 in pregnancy: living systematic review and meta-analysis. *BMJ*. 2020 Sep 1;m3320.

- 155.** Zambrano LD, Ellington S, Strid P, Galang RR, Oduyebo T, Tong VT, et al. Update: Characteristics of Symptomatic Women of Reproductive Age with Laboratory-Confirmed SARS-CoV-2 Infection by Pregnancy Status — United States, January 22–October 3, 2020. *MMWR Morb Mortal Wkly Rep.* 2020 Nov 6;69(44):1641–7.
- 156.** Watson H, Raeside A, Van Schalkwyk J, Money D, Yudin M, Castillo E, et al. SOGC Statement on Pregnant Workers during the COVID-19 Pandemic [Internet]. The Society of Obstetrics and Gynecology of Canada; 2020. Available from: https://www.sogc.org/common/Uploaded%20files/Latest%20News/EN_StatementOnPregnantWorkersDuringCOVID.pdf
- 157.** The University of British Columbia. Canadian Surveillance of COVID-19 in Pregnancy: Epidemiology, Maternal and Infant Outcomes [Internet]. Reproductive Infectious Diseases Program. [cited 2021 Jan 24]. Available from: <http://med-fom-ridprogram.sites.olt.ubc.ca/cancovid-preg/>
- 158.** CDCMMWR. Severe Outcomes Among Patients with Coronavirus Disease 2019 (COVID-19) — United States, February 12–March 16, 2020. *MMWR Morb Mortal Wkly Rep* [Internet]. 2020 [cited 2020 Dec 1];69. Available from: <https://www.cdc.gov/mmwr/volumes/69/wr/mm6912e2.htm>
- 159.** Wu C, Chen X, Cai Y, Xia J, Zhou X, Xu S, et al. Risk Factors Associated With Acute Respiratory Distress Syndrome and Death in Patients With Coronavirus Disease 2019 Pneumonia in Wuhan, China. *JAMA Intern Med.* 2020 Jul 1;180(7):934.
- 160.** Grasselli G, Zangrillo A, Zanella A, Antonelli M, Cabrini L, Castelli A, et al. Baseline Characteristics and Outcomes of 1591 Patients Infected With SARS-CoV-2 Admitted to ICUs of the Lombardy Region, Italy. *JAMA.* 2020 Apr 28;323(16):1574–81.
- 161.** Li Q, Guan X, Wu P, Wang X, Zhou L, Tong Y, et al. Early Transmission Dynamics in Wuhan, China, of Novel Coronavirus-Infected Pneumonia. *N Engl J Med.* 2020 Jan 29;382(13):1199–207.
- 162.** Huang C, Wang Y, Li X, Ren L, Zhao J, Hu Y, et al. Clinical features of patients infected with 2019 novel coronavirus in Wuhan, China. *The Lancet.* 2020 Feb;395(10223):497–506.
- 163.** Guan W, Ni Z, Hu Y, Liang W, Ou C, He J, et al. Clinical Characteristics of Coronavirus Disease 2019 in China. *N Engl J Med.* 2020 Apr 30;382(18):1708–20.
- 164.** Yang X, Yu Y, Xu J, Shu H, Xia J, Liu H, et al. Clinical course and outcomes of critically ill patients with SARS-CoV-2 pneumonia in Wuhan, China: a single-centered, retrospective, observational study. *Lancet Respir Med.* 2020 May;8(5):475–81.
- 165.** Young BE, Ong SWX, Kalimuddin S, Low JG, Tan SY, Loh J, et al. Epidemiologic Features and Clinical Course of Patients Infected With SARS-CoV-2 in Singapore. *JAMA.* 2020 Apr 21;323(15):1488.
- 166.** Rawson TM, Moore LSP, Zhu N, Ranganathan N, Skolimowska K, Gilchrist M, et al. Bacterial and Fungal Coinfection in Individuals With Coronavirus: A Rapid Review To Support COVID-19 Antimicrobial Prescribing. *Clin Infect Dis.* 2020 Dec 3;71(9):2459–68.
- 167.** Bartoletti M, Pascale R, Cricca M, Rinaldi M, Maccaro A, Bussini L, et al. Epidemiology of Invasive Pulmonary Aspergillosis Among Intubated Patients With COVID-19: A Prospective Study. *Clin Infect Dis* [Internet]. 2020 Jul 28 [cited 2020 Jun 12];(ciaa1065). Available from: <https://doi.org/10.1093/cid/ciaa1065>
- 168.** Yang SS, Lipes J, Dial S, Schwartz B, Laporta D, Wong E, et al. Outcomes and clinical practice in patients with COVID-19 admitted to the intensive care unit in Montréal, Canada: a descriptive analysis. *CMAJ Open.* 2020 Oct;8(4):E788–95.
- 169.** Outcomes of hospitalized and critically ill COVID-19 patients in the first phase of the pandemic in Canada: A National Cohort Study. SPRINT-SARI Canada Investigators. *CMAJ Open* (in press).
- 170.** World Health Organization. WHO Coronavirus Disease (COVID-19) Dashboard [Internet]. Coronavirus disease (COVID-19) pandemic. [cited 2020 Nov 25]. Available from: <https://covid19.who.int/table>
- 171.** Dexamethasone in Hospitalized Patients with Covid-19 — Preliminary Report. *N Engl J Med* [Internet]. 2020 Jul 17 [cited 2020 Dec 6]; Available from: <https://doi.org/10.1056/NEJMoa2021436>
- 172.** Quah P, Li A, Phua J. Mortality rates of patients with COVID-19 in the intensive care unit: a systematic review of the emerging literature. *Crit Care.* 2020 Dec;24(1):285.
- 173.** Dennis JM, McGovern AP, Vollmer SJ, Mateen BA. Improving Survival of Critical Care Patients With Coronavirus Disease 2019 in England: A National Cohort Study, March to June 2020. *Crit Care Med* [Internet]. 2020 Nov 30 [cited 2020 Dec 1]; Online First. Available from: https://journals.lww.com/ccmjournal/Abstract/9000/Improving_Survival_of_Critical_Care_Patients_With.95449.aspx
- 174.** Horwitz LI, Jones SA, Cerfolio RJ, Francois F, Greco J, Rudy B, et al. Trends in COVID-19 Risk-Adjusted Mortality Rates. :3.
- 175.** Centers for Disease Control and Prevention. COVID-19 Cases, Deaths, and Trends in the US [Internet]. Centers for Disease Control and Prevention. 2020 [cited 2020 Dec 1]. Available from: <https://covid.cdc.gov/covid-data-tracker>
- 176.** Di Stadio A, Ricci G, Greco A, de Vincentiis M, Ralli M. Mortality rate and gender differences in COVID-19 patients dying in Italy: A comparison with other countries. *Eur Rev Med Pharmacol Sci.* 2020;(24):4066–7.
- 177.** Onder G, Rezza G, Brusaferro S. Case-Fatality Rate and Characteristics of Patients Dying in Relation to COVID-19 in Italy. *JAMA* [Internet]. 2020 Mar 23 [cited 2020 Dec 1]; Available from: <https://jamanetwork.com/journals/jama/fullarticle/2763667>
- 178.** Gold JAW, Rossen LM, Ahmad FB, Sutton P, Li Z, Salvatore PP, et al. Race, Ethnicity, and Age Trends in Persons Who Died from COVID-19 — United States, May–August 2020. *MMWR Morb Mortal Wkly Rep.* 2020 Oct 23;69(42):1517–21.
- 179.** Aziz S, Arabi YM, Alhazzani W, Evans L, Citerio G, Fischkoff K, et al. Managing ICU surge during the COVID-19 crisis: rapid guidelines. *Intensive Care Med.* :1.
- 180.** Grasselli G, Pesenti A, Cecconi M. Critical Care Utilization for the COVID-19 Outbreak in Lombardy, Italy: Early Experience and Forecast During an Emergency Response. *JAMA.* 2020 Apr 28;323(16):1545.
- 181.** Camporesi S, Mori M. Ethicists, doctors and triage decisions: who should decide? And on what basis? *J Med Ethics* [Internet]. 2020 Jul 10 [cited 2020 Dec 1]; Available from: <https://jme.bmj.com/content/early/2020/07/10/medethics-2020-106499>

- 182.** Orfali K. What Triage Issues Reveal: Ethics in the COVID-19 Pandemic in Italy and France. *J Bioethical Inq.* 2020 Nov 9;1–5.
- 183.** Eker S. Validity and usefulness of COVID-19 models. *Humanit Soc Sci Commun.* 2020 Aug 3;7(1):1–5.
- 184.** Holmdahl I, Buckee C. Wrong but Useful — What Covid-19 Epidemiologic Models Can and Cannot Tell Us. *N Engl J Med.* 2020 Jul 23;383(4):303–5.
- 185.** Bertozzi AL, Franco E, Mohler G, Short MB, Sledge D. The challenges of modeling and forecasting the spread of COVID-19. *Proc Natl Acad Sci.* 2020 Jul 21;117(29):16732.
- 186.** King JA, Whitten TA, Bakal JA, McAlister FA. Symptoms associated with a positive result for a swab for SARS-CoV-2 infection among children in Alberta. *CMAJ.* 2021 Jan 4;193(1):E1–9.
- 187.** Liguoro I, Pilotto C, Bonanni M, Ferrari ME, Pusiol A, Nocerino A, et al. SARS-COV-2 infection in children and newborns: a systematic review. *Eur J Pediatr.* 2020 Jul;179(7):1029–46.
- 188.** Riphagen S, Gomez X, Gonzalez-Martinez C, Wilkinson N, Theocharis P. Hyperinflammatory shock in children during COVID-19 pandemic. *The Lancet.* 2020 May;395(10237):1607–8.
- 189.** COVID-19 Scientific Advisory Group Rapid Evidence Report: What role might children play in community SARS-CoV-2 transmission? What measures might mitigate potential additional risk of transmission of COVID-19 related to school and daycare reopening? [Internet]. Alberta Health Services; 2020 Aug [cited 2020 Dec 5]. Available from: <https://www.albertahealthservices.ca/assets/info/ppih/if-ppih-covid-19-sag-role-of-children-in-community-transmission-rapid-review.pdf>
- 190.** Feldstein LR, Rose EB, Horwitz SM, Collins JP, Newhams MM, Son MBF, et al. Multisystem Inflammatory Syndrome in U.S. Children and Adolescents. *N Engl J Med.* 2020 Jun 29;383(4):334–46.
- 191.** Greenhalgh T, Knight M, A'Court C, Buxton M, Husain L. Management of post-acute covid-19 in primary care. *BMJ.* 2020 Aug 11;370:m3026.
- 192.** Rubin R. As Their Numbers Grow, COVID-19 “Long Haulers” Stump Experts. *JAMA.* 2020 Oct 13;324(14):1381–3.
- 193.** Carfi A, Bernabei R, Landi F, for the Gemelli Against COVID-19 Post-Acute Care Study Group. Persistent Symptoms in Patients After Acute COVID-19. *JAMA.* 2020 Aug 11;324(6):603–5.
- 194.** Tenforde MW, Kim SS, Lindsell CJ, Billig Rose E, Shapiro NI, Files DC, et al. Symptom Duration and Risk Factors for Delayed Return to Usual Health Among Outpatients with COVID-19 in a Multistate Health Care Systems Network — United States, March–June 2020. *MMWR Morb Mortal Wkly Rep.* 2020 Jul 31;69(30):993–8.
- 195.** Nehme M, Braillard O, Alcoba G, Aebischer Perone S, Courvoisier D, Chappuis F, et al. COVID-19 Symptoms: Longitudinal Evolution and Persistence in Outpatient Settings. *Ann Intern Med [Internet].* 2020 Dec 8 [cited 2021 Jan 12]; Available from: <https://doi.org/10.7326/M20-5926>
- 196.** Taquet M, Luciano S, Geddes JR, Harrison PJ. Bidirectional associations between COVID-19 and psychiatric disorder: retrospective cohort studies of 62 354 COVID-19 cases in the USA. *Lancet Psychiatry.* 2020 Nov;S2215036620304624.
- 197.** Wong AW, Shah AS, Johnston JC, Carlsten C, Ryerson CJ. Patient-reported outcome measures after COVID-19: a prospective cohort study. *Eur Respir J.* 2020 Nov 1;56(5):2003276.
- 198.** Ladds E, Rushforth A, Wieringa S, Taylor S, Rayner C, Husain L, et al. Persistent symptoms after Covid-19: qualitative study of 114 “long Covid” patients and draft quality principles for services. *BMC Health Serv Res.* 2020 Dec;20(1):1144.
- 199.** Mishra S, Kwong JC, Chan AK, Baral SD. Understanding heterogeneity to inform the public health response to COVID-19 in Canada. *Can Med Assoc J.* 2020 Jun 22;192(25):E684–5.
- 200.** COVID-19 and Indigenous Communities: Confirmed cases of COVID-19 [Internet]. Government of Canada; [cited 2020 Nov 17]. Available from: <https://www.sac-isc.gc.ca/eng/1598625105013/1598625167707>
- 201.** Update on COVID-19 in Indigenous communities [Internet]. Government of Canada. 2020 [cited 2020 Oct 20]. Available from: <https://www.canada.ca/en/indigenous-services-canada/news/2020/07/update-on-covid-19-in-indigenous-communities.html>
- 202.** Richardson L, Crawford A. COVID-19 and the decolonization of Indigenous public health. *Can Med Assoc J.* 2020 Sep 21;192(38):E1098–100.
- 203.** Lane R. The Impact of COVID-19 on Indigenous Peoples. United Nations Department of Economic and Social Affairs; 2020 May p. 4.
- 204.** COVID-19 in Indigenous communities: “alarming rise” in new and active cases [Internet]. Canadian Broadcasting Corporation. 2020 [cited 2020 Nov 24]. Available from: <https://www.cbc.ca/news/indigenous/indigenous-covid-19-update-1.5752343>
- 205.** Pandemic Planning Tool for First Nations Communities [Internet]. First Nations Health Managers Association; [cited 2020 Nov 17]. Available from: <https://fnhma.ca/news-publication/publications/pandemic-planning-tool/>
- 206.** The First Nations Principles of OCAP™. First Nations Information Governance Centre; p. 2.
- 207.** Ramraj C, Shahidi FV, Darity W, Kawachi I, Zuberi D, Siddiqi A. Equally inequitable? A cross-national comparative study of racial health inequalities in the United States and Canada. *Soc Sci Med.* 2016 Jul;161:19–26.
- 208.** Siddiqi A, Shahidi FV, Ramraj C, Williams DR. Associations between race, discrimination and risk for chronic disease in a population-based sample from Canada. *Soc Sci Med.* 2017 Dec 1;194:135–41.
- 209.** Laurencin CT, McClinton A. The COVID-19 Pandemic: a Call to Action to Identify and Address Racial and Ethnic Disparities. *J Racial Ethn Health Disparities.* 2020 Jun;7(3):398–402.
- 210.** Coronavirus (COVID-19) related deaths by ethnic group, England and Wales [Internet]. Office for National Statistics. 2020 [cited 2020 Nov 23]. Available from: <https://www.ons.gov.uk/peoplepopulationandcommunity/birthsdeathsandmarriages/deaths/articles/coronavirusrelateddeathsbyethnicgroupenglandandwales/2march2020to10april2020>

- 211.** Gibb JK, DuBois LZ, Williams S, McKerracher L, Juster R, Fields J. Sexual and gender minority health vulnerabilities during the COVID-19 health crisis. *Am J Hum Biol* [Internet]. 2020 Sep [cited 2020 Dec 6];32(5). Available from: <https://onlinelibrary.wiley.com/doi/10.1002/ajhb.23499>
- 212.** Knope J. Toronto groups threaten legal action against city over “deplorable” shelter system conditions [Internet]. Canadian Broadcasting Corporation. 2020 [cited 2020 Nov 23]. Available from: <https://www.cbc.ca/news/canada/toronto/toronto-groups-file-legal-action-homeless-shelter-system-1.5540320>
- 213.** Rocha R, Shingler B, Montpetit J. Montreal's poorest and most racially diverse neighbourhoods hit hardest by COVID-19, data analysis shows [Internet]. Canadian Broadcasting Corporation. 2020 [cited 2020 Nov 23]. Available from: <https://www.cbc.ca/news/canada/montreal/race-covid-19-montreal-data-census-1.5607123>
- 214.** Guttman A, Gandhi S, Wanigaratne S, Lu H, Ferreira-Legere LE, Paul J, et al. COVID-19 in Immigrants, Refugees and Other Newcomers in Ontario: Characteristics of Those Tested and Those Confirmed Positive, as of June 13, 2020. *ICES*; 2020 Sep.
- 215.** COVID-19 Dashboard [Internet]. ICES. 2020 [cited 2020 Nov 12]. Available from: <https://www.ices.on.ca/DAS/AHRQ/COVID-19-Dashboard>
- 216.** Klein M, Rollet K, Saeed S, Cox J, Potter M, Cohen J, et al. HIV and hepatitis C virus coinfection in Canada: challenges and opportunities for reducing preventable morbidity and mortality: HIV and HCV coinfection in Canada. *HIV Med*. 2013 Jan;14(1):10–20.
- 217.** Bonn M, Palayew A, Bartlett S, Brothers TD, Touesnard N, Tyndall M. Addressing the Syndemic of HIV, Hepatitis C, Overdose, and COVID-19 Among People Who Use Drugs: The Potential Roles for Decriminalization and Safe Supply. *J Stud Alcohol Drugs*. 2020 Sep 1;81(5):556–60.
- 218.** Alexander GC, Stoller KB, Haffajee RL, Saloner B. An Epidemic in the Midst of a Pandemic: Opioid Use Disorder and COVID-19. *Ann Intern Med*. 2020/04/02 ed. 2020 Jul 7;173(1):57–8.
- 219.** Whitfield M, Reed H, Webster J, Hope V. Response to Marsden et al (2020): Mitigation for the impacts on needle and syringe programmes is needed. *Addiction* [Internet]. 2020 Jul 21 [cited 2020 Dec 7];n/a(n/a). Available from: <https://doi.org/10.1111/add.15193>
- 220.** Dunlop A, Lokuge B, Masters D, Sequeira M, Saul P, Dunlop G, et al. Challenges in maintaining treatment services for people who use drugs during the COVID-19 pandemic. *Harm Reduct J*. 2020 Dec;17(1):26.
- 221.** Risk Mitigation in the Context of Dual Public Health Emergencies [Internet]. British Columbia Center on Substance Use; 2020 [cited 2020 Aug 17]. Available from: <https://www.bccsu.ca/wp-content/uploads/2020/05/Risk-Mitigation-in-the-Context-of-Dual-Public-Health-Emergencies-v1.6.pdf>
- 222.** Illicit Drug Toxicity Deaths in BC January 1, 2010 – October 31, 2020 [Internet]. British Columbia Coroners Service; 2020 [cited 2020 Nov 25]. Available from: <https://www2.gov.bc.ca/assets/gov/birth-adoption-death-marriage-and-divorce/deaths/coroners-service/statistical/illicit-drug.pdf>
- 223.** Rai N, Sharma M. People who use drugs are experiencing overlapping crises during COVID-19 [Internet]. *CMAJ Blogs*. 2020 [cited 2020 Dec 6]. Available from: <http://cmajblogs.com/people-who-use-drugs-experiencing-overlapping-crises-during-covid-19/>
- 224.** DiMatteo E. City reports spike in overdose deaths amid COVID-19 service cuts [Internet]. *NOW Magazine*. 2020 [cited 2020 Nov 24]. Available from: <https://nowtoronto.com/news/coronavirus-opioid-crisis-overdose-deaths>
- 225.** Slaunwhite AK, Gan WQ, Xavier C, Zhao B, Buxton JA, Desai R. Overdose and risk factors for coronavirus disease 2019. *Drug Alcohol Depend*. 2020 Jul;212:108047.
- 226.** Jozaghi E, Maynard R, Hamm D, Marsh S. COVID-19 and people who use drugs: a call for action. *Can J Public Health*. 2020 Jun;111(3):401–2.
- 227.** COVID-19 in Mental Health and Substance Use: Knowledge Synthesis [Internet]. CIHR Institute of Neurosciences, Mental Health and Addiction; 2020 Jun [cited 2020 Oct 26]. Available from: https://cihr-irsc.gc.ca/e/documents/CMH-KS-Preliminary-Lay-Summary-Report_v06222020-1.pdf
- 228.** Jadidzadeh A, Kneebone R. Homeless Shelter Flows in Calgary and the Potential Impact of COVID-19. *Can Public Policy*. 2020 Aug 1;46(S2):S160–5.
- 229.** Boucher T. Pandemic Perspectives: surviving on the street during COVID-19 [Internet]. Canadian Broadcasting Corporation. 2020 [cited 2020 Nov 24]. Available from: <https://www.cbc.ca/news/canada/manitoba/tom-boucher-covid-pandemic-perspective-series-1.5795176>
- 230.** Tucker JS, D’Amico EJ, Pedersen ER, Garvey R, Rodriguez A, Klein DJ. Behavioral Health and Service Usage During the COVID-19 Pandemic Among Emerging Adults Currently or Recently Experiencing Homelessness. *J Adolesc Health*. 2020 Oct;67(4):603–5.
- 231.** Mosites E, Parker EM, Clarke KEN, Gaeta JM, Baggett TP, Imbert E, et al. Assessment of SARS-CoV-2 Infection Prevalence in Homeless Shelters — Four U.S. Cities, March 27–April 15, 2020. *MMWR Morb Mortal Wkly Rep*. 2020 May 1;69(17):521–2.
- 232.** Casey L. COVID-19 spreading among Toronto’s homeless, with 30 cases reported [Internet]. Canadian Broadcasting Corporation. 2020 [cited 2020 Nov 25]. Available from: <https://www.cbc.ca/news/canada/toronto/homeless-population-toronto-covid-19-1.5532300>
- 233.** Wells N. Victoria wants homeless to be housed in empty hotels during pandemic [Internet]. *Vancouver Sun*. 2020 [cited 2020 Nov 25]. Available from: <https://vancouversun.com/news/local-news/victoria-wants-homeless-to-be-housed-in-empty-hotels-during-pandemic>
- 234.** Schiff R, Buccieri K, Schiff JW, Kauppi C, Riva M. COVID-19 and pandemic planning in the context of rural and remote homelessness. *Can J Public Health* [Internet]. 2020 Sep 24; Available from: <https://doi.org/10.17269/s41997-020-00415-1>

- 235.** Culhane D, Treglia D, Steif K. Estimated Emergency and Observational/Quarantine Bed Need for the US Homeless Population Related to COVID-19 Exposure by County; Projected Hospitalizations, Intensive Care Units and Mortality [Internet]. National Alliance to End Homelessness; 2020 Mar [cited 2020 Nov 24]. Available from: <https://endhomelessness.org/resource/estimated-emergency-and-observational-quarantine-bed-need-for-the-us-homeless-population-related-to-covid-19-exposure-by-county-projected-hospitalizations-intensive-care-units-and-mortality/>
- 236.** Khandor E, Mason K, Chambers C, Rossiter K, Cowan L, Hwang SW. Access to primary health care among homeless adults in Toronto, Canada: results from the Street Health survey. *Open Med Peer-Rev Indep Open-Access J.* 2011/05/24 ed. 2011;5(2):e94–103.
- 237.** Rogers JH, Brandstetter E, Wolf C, Logue J, Kim AE, Newman KL, et al. Prevalence of Influenza-like Illness in Sheltered Homeless Populations: A Cross-Sectional Study in Seattle, WA. *Open Forum Infect Dis.* 2019 Oct 23;6(Suppl 2):S795–S795.
- 238.** Stanley LL. Influenza at San Quentin Prison, California. *Public Health Rep* 1896-1970. 1919;34(19):996–1008.
- 239.** Bick JA. Infection Control in Jails and Prisons. *Clin Infect Dis.* 2007 Oct 15;45(8):1047–55.
- 240.** Kouyoumdjian F, Schuler A, Matheson FI, Hwang SW. Health status of prisoners in Canada: Narrative review. *Can Fam Physician Med Fam Can.* 2016 Mar;62(3):215–22.
- 241.** Barnert E, Ahalt C, Williams B. Prisons: Amplifiers of the COVID-19 Pandemic Hiding in Plain Sight. *Am J Public Health.* 2020 Jul;110(7):964–6.
- 242.** Hawks L, Woolhandler S, McCormick D. COVID-19 in Prisons and Jails in the United States. *JAMA Intern Med.* 2020 Aug 1;180(8):1041.
- 243.** Saloner B, Parish K, Ward JA, DiLaura G, Dolovich S. COVID-19 Cases and Deaths in Federal and State Prisons. *JAMA.* 2020 Aug 11;324(6):602.
- 244.** Neufield J. Corrections and correctional facilities as a public health setting in Canada [Internet]. National Collaborating Centre for Infectious Diseases; 2020 [cited 2020 Nov 23]. Available from: https://nccid.ca/wp-content/uploads/sites/2/2020/09/Corrections_2020_Final.pdf
- 245.** Testing of inmates in Federal Correctional Institutions for COVID-19 [Internet]. Correctional Services Canada. [cited 2020 Nov 26]. Available from: <https://www.csc-scc.gc.ca/001/006/001006-1014-en.shtml>
- 246.** Advocate says second COVID-19 wave has inmates locked down in ‘atrocious’ conditions as 5 test positive [Internet]. Global News. 2020 [cited 2020 Nov 26]. Available from: <https://globalnews.ca/news/7456266/5-federal-inmates-test-positive-for-covid-19-as-case-counts-spike-across-canada/>
- 247.** Franco-Paredes C, Ghandnoosh N, Latif H, Krsak M, Henao-Martinez AF, Robins M, et al. Decarceration and community re-entry in the COVID-19 era. *Lancet Infect Dis.* 2020 Sep;S1473309920307301.
- 248.** Tadir CP, Gisinger T, Kautzy-Willer A, Kublickiene K, Herrero MT, Raparelli V, et al. The influence of sex and gender domains on COVID-19 cases and mortality. *Can Med Assoc J.* 2020 Sep 8;192(36):E1041–5.
- 249.** Klein SL, Dhakal S, Ursin RL, Deshpande S, Sandberg K, Mauvais-Jarvis F. Biological sex impacts COVID-19 outcomes. Coyne CB, editor. *PLOS Pathog.* 2020 Jun 22;16(6):e1008570.
- 250.** Lien A, Edjoc R, Atchessi N, Abalos C, Gabrani-Juma I, Heisz M. COVID-19 and the increasing need for sex-disaggregated mortality data in Canada and worldwide. *Can Commun Dis Rep.* 2020 Jul 2;46(78):231–5.
- 251.** Chen I, Bougie O. Women’s Issues in Pandemic Times: How COVID-19 Has Exacerbated Gender Inequities for Women in Canada and around the World. *J Obstet Gynaecol Can.* 2020 Oct;S1701216320305260.
- 252.** Policy brief: the impact of COVID-19 on women [Internet]. United Nations; 2020 Apr [cited 2020 Nov 28]. Available from: <https://www.unwomen.org/-/media/headquarters/attachments/sections/library/publications/2020/policy-brief-the-impact-of-covid-19-on-women-en.pdf>
- 253.** Lemieux T, Milligan K, Schirle T, Skuterud M. Initial Impacts of the COVID-19 Pandemic on the Canadian Labour Market. *Can Public Policy.* 2020 Jun 24;46(S1):S55–65.
- 254.** COVID-19 and the labour market in May 2020 [Internet]. Statistics Canada; 2020 [cited 2020 Nov 28]. Available from: http://publications.gc.ca/collections/collection_2020/statcan/11-627-m/11-627-m2020038-eng.pdf
- 255.** Jozaghi E, Bird L. COVID-19 and sex workers: human rights, the struggle for safety and minimum income. *Can J Public Health.* 2020 Jun;111(3):406–7.
- 256.** Gibb JK, DuBois LZ, Williams S, McKerracher L, Juster R, Fields J. Sexual and gender minority health vulnerabilities during the COVID-19 health crisis. *Am J Hum Biol* [Internet]. 2020 Sep [cited 2020 Dec 6];32(5). Available from: <https://onlinelibrary.wiley.com/doi/10.1002/ajhb.23499>
- 257.** Federal Disability Reference Guide [Internet]. Government of Canada. 2013 [cited 2020 Aug 28]. Available from: <https://www.canada.ca/en/employment-social-development/programs/disability/arc/reference-guide.html>
- 258.** COVID-19 and people with disabilities in Canada [Internet]. Government of Canada. 2020 [cited 2020 Nov 28]. Available from: <https://www.canada.ca/en/public-health/services/diseases/2019-novel-coronavirus-infection/guidance-documents/people-with-disabilities.html>
- 259.** Pettinicchio D, Maroto M. COVID-19: Financial future grim for Canadians with disabilities, health conditions [Internet]. The Conversation. [cited 2020 Nov 28]. Available from: <http://theconversation.com/covid-19-financial-future-grim-for-canadians-with-disabilities-health-conditions-143168>
- 260.** COVID-19 and Disability: Recommendations to the Government of Canada [Internet]. Spinal Cord Injury Canada - Lésions Médullaires Canada. 2020 [cited 2020 Nov 28]. Available from: <https://sci-can.ca/resource/recommendations-government-canada-relating-covid-and-people-disabilities>
- 261.** Courtenay K, Perera B. COVID-19 and people with intellectual disability: impacts of a pandemic. *Ir J Psychol Med.* 2020 Sep;37(3):231–6.



The Royal Society of Canada
282 Somerset Street West
Ottawa, Ontario K2P 0J6
www.rsc-src.ca
613-991-6990

La Société royale du Canada
282, rue Somerset ouest
Ottawa (Ontario) K2P 0J6
www.rsc-src.ca
613-991-6990